



# **CONFIGURATION GUIDE FOR THE CONNECTION TO OVIWAN FOR WINDOWS XP AND MAC**

## 1. Configuration Guide for Windows XP

**Step 1: Download and install the free program SecureW2.**

**Step 2: Configure the protocol TCP/IP**

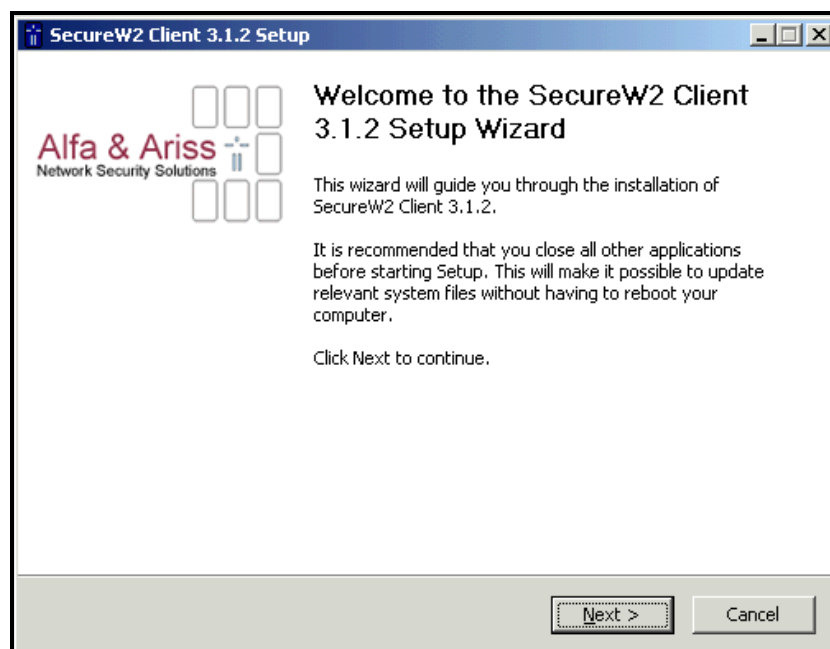
**Step 3: Configure the Wireless Network**

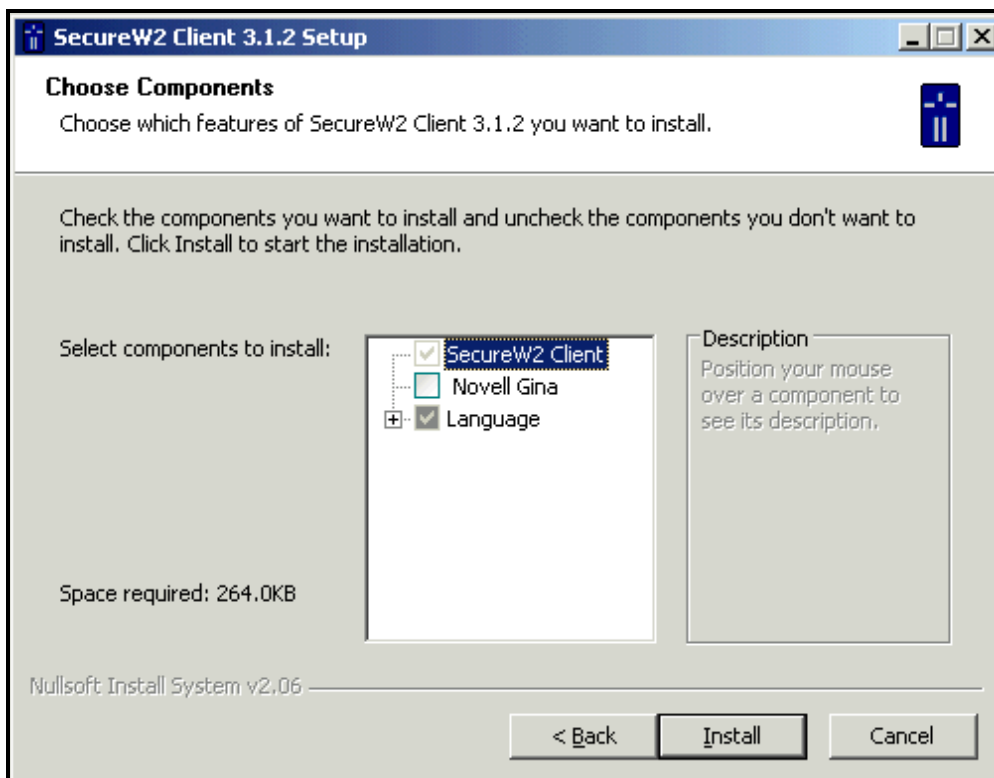
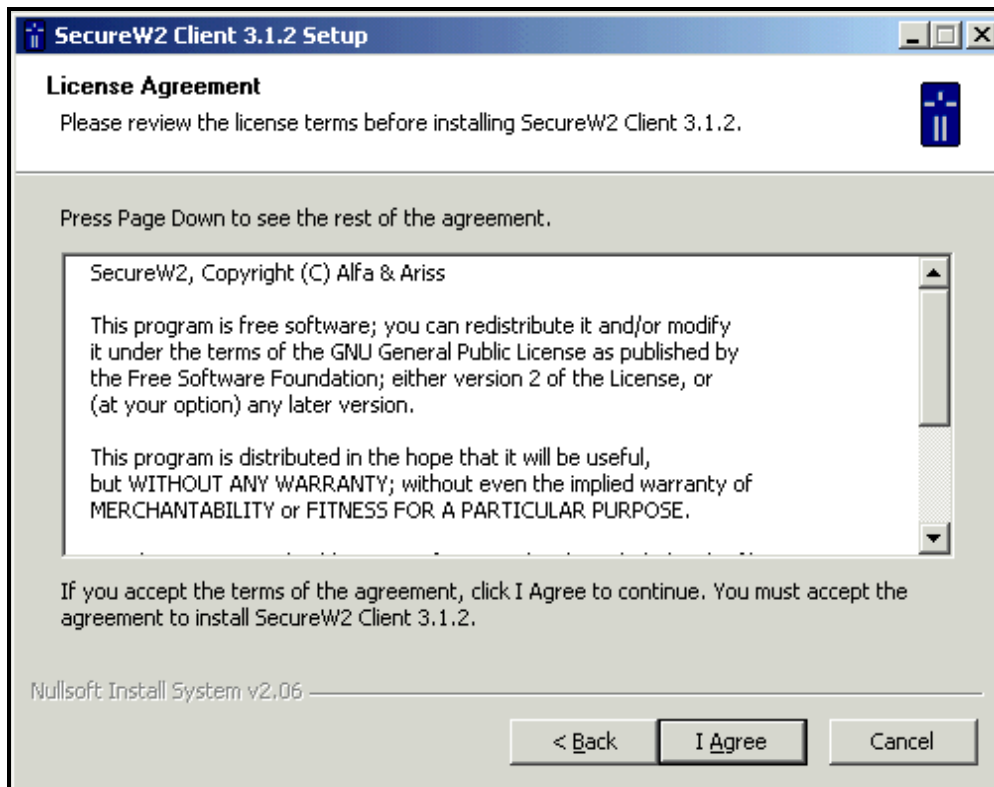
**Step 4: Connection to the wireless network.**

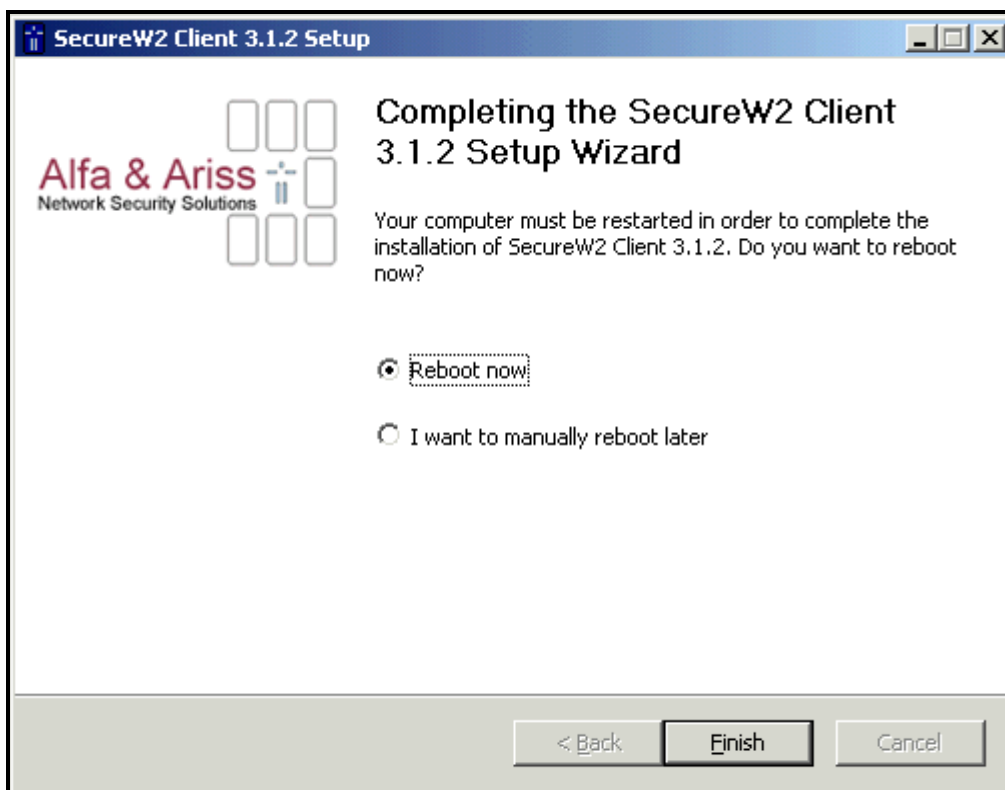
### 1.1. Download and install the free program SecureW2.

The SecureW2 program (named suplicant) does the validation of our user and password in the wireless network using the EAP-TTLS protocol.

You can follow the following steps for the installation of the SecureW2 client.



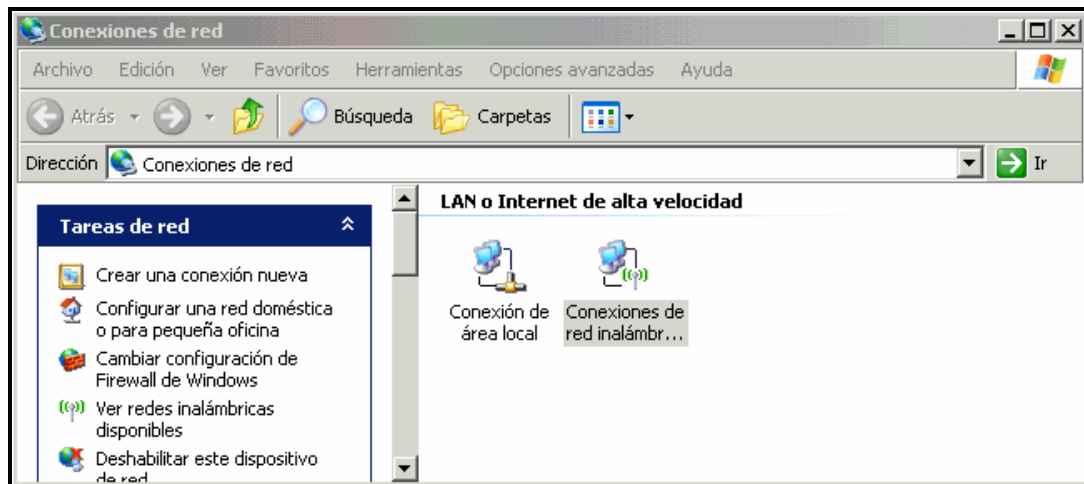




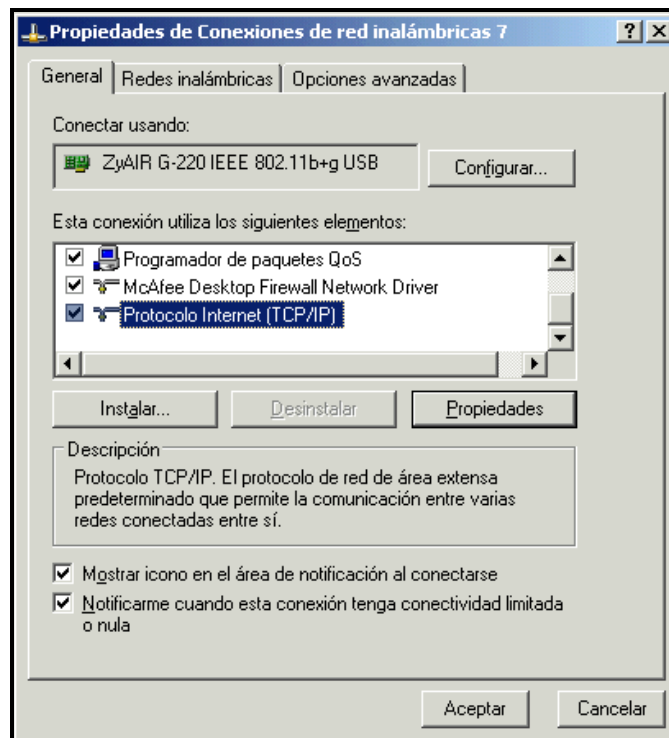
## 1.2. Configure the protocol TCP/IP

You can follow the following steps

Go to “Inicio -> Configuración -> Panel de Control -> Conexiones de red e Internet” -> Mark the “Conexiones de red inalámbrica” icon. Press the right button of the mouse and select “Propiedades”.

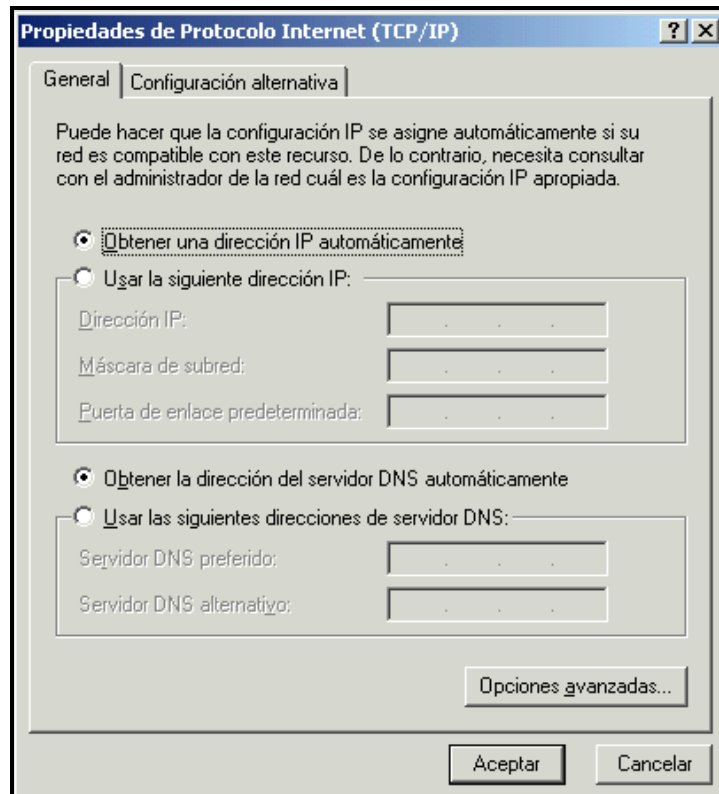


On the “General” tab of the window “Propiedades de Conexión de Red Inalámbrica” mark “Protocolo Internet TCP/IP” and press on the “Propiedades” button.



These options must be marked:

- “Obtener una dirección IP automáticamente”.
- “Obtener direcciones del servidor DNS automáticamente”.

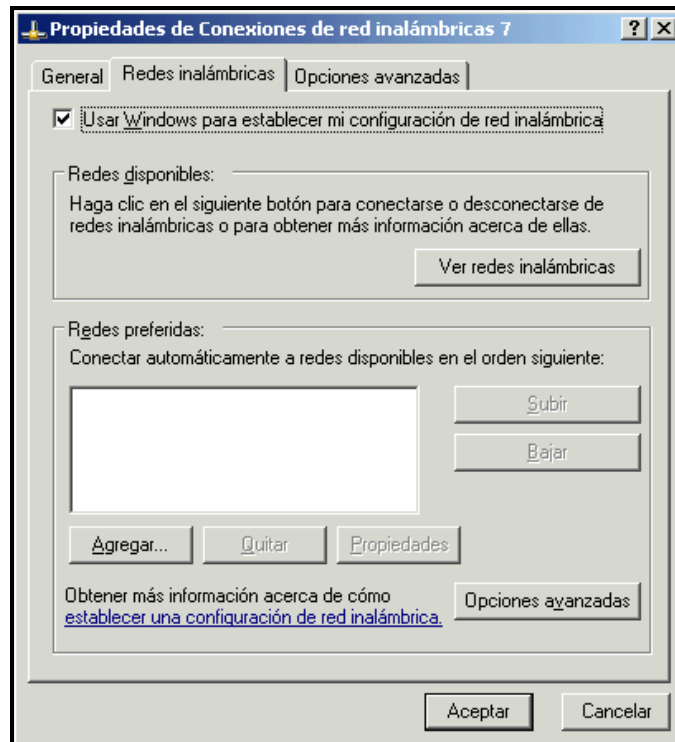


Click on the “Aceptar” button.

### 1.3. Configure the Wireless Network

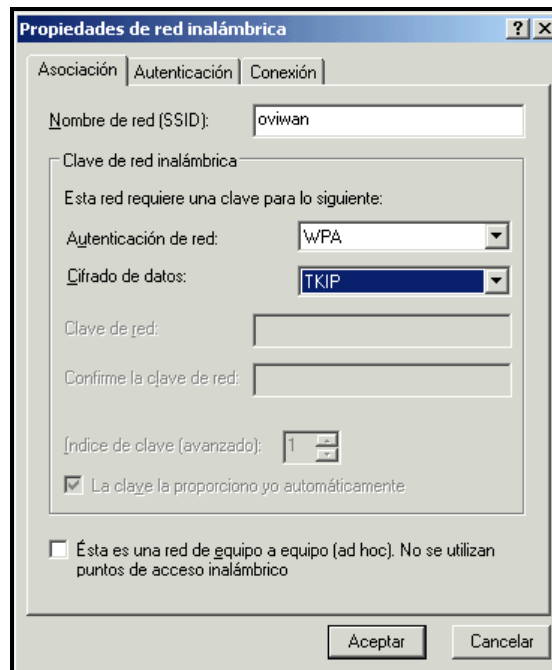
You can follow the following steps

In the “Redes Inalámbricas” tab of the window “Propiedades de Conexión de Red Inalámbrica” mark “Usar Windows para establecer mi configuración de red inalámbrica” and click on the button “Agregar” in section “Redes Preferidas”.

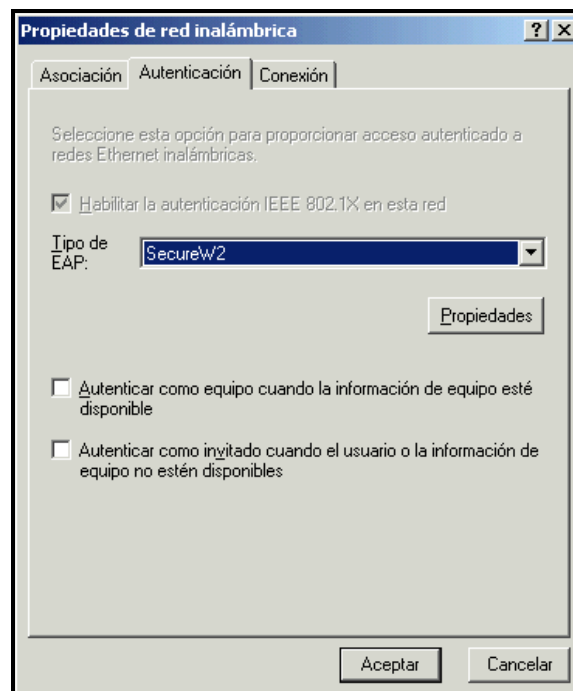


In the new window “**Propiedades de red inalámbrica**” we select the “**Asociación**” tab and complete the following sections:

- In “*Nombre de red (SSID)*” write: **oviwan**
- In “*Autenticación de red*” select: **WPA**
- In “*Cifrado de datos*” select : **TKIP**



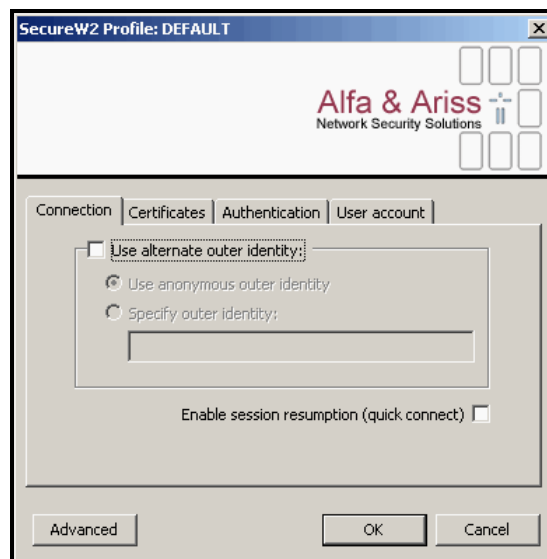
In the **Autenticación** tab, in **Tipo de EAP**, select **SecureW2** and click on the button **Propiedades**.



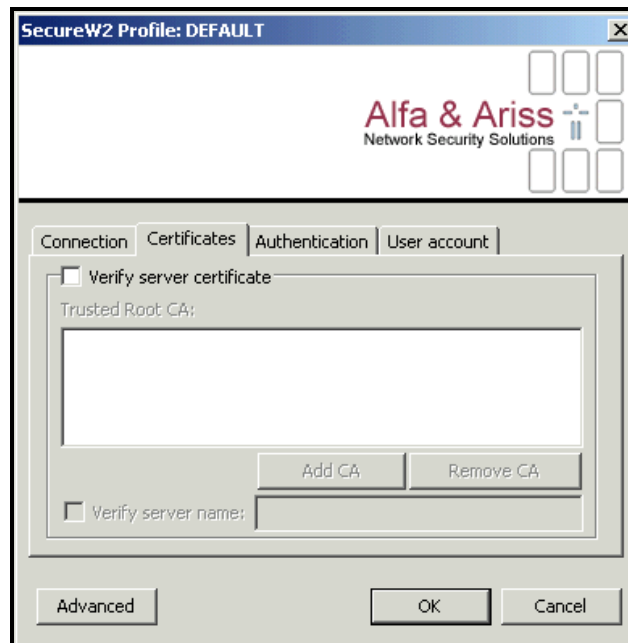
Configure the **SecureW2** client. Exists an option to create profiles for different networks or using the profile by defect. We have to configure the profile by defect (*Profile: DEFAULT*). Click on the button “**Configure**”.



In the “**Connection**” tab we can leave without mark the option “*Use alternate outer identity*”



In the “**Certificates**” tab *NOT* have to be marked the option “*Verify server certificate*”



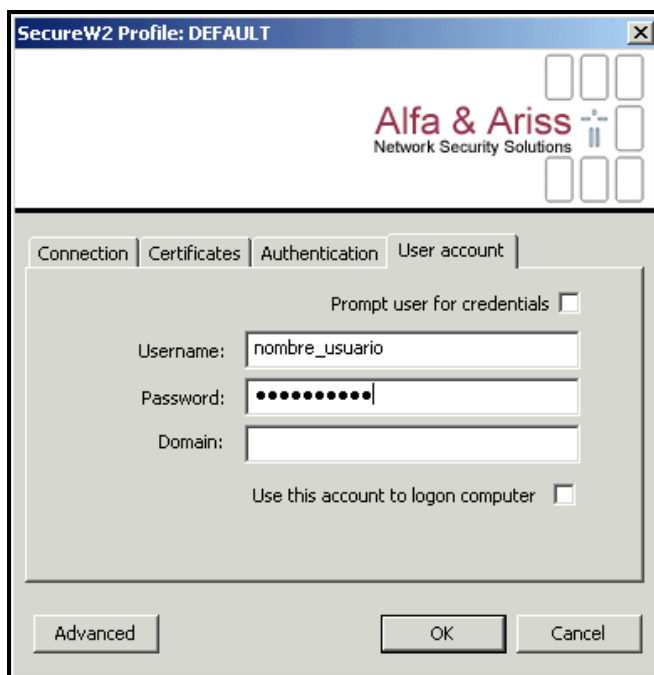
In the “**Authentication**” tab, in the section “**Select Authentication Method**”, we select “**PAP**”.



In the “**User Account**” tab we are going to configure the account used to make the connection to the Wireless Network. The *Username* and *Password* is the used in the personal services of the University. It is possible to be configures for:

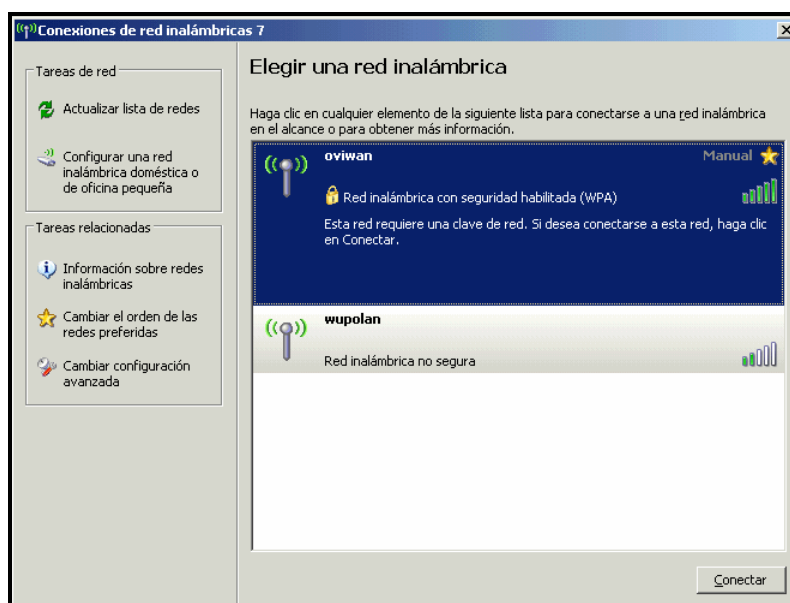
- It asks for our *Username* and *Password* whenever we try a connection, marking the option **Prompt user for credentials**.
- It don't ask for these data whenever the connection is made because we are going to use the same data forever. To do this, it is necessary to fill up the sections *Username* and *Password*. The username must be the used in the mail address, as well as the Password.

In both cases it is necessary to leave empty the section **Domain**



#### 1.4. Connection to the wireless network

Once made the configuration, we just have to select the wireless network we want to connect. We will select “**Oviwan**” SSID.



## 2. Configuration Guide for MacOS

**Step 1: Connect the airport card**

**Step 2: Configuration the airport card**

**Step 3: Choose the *oviwan* network**

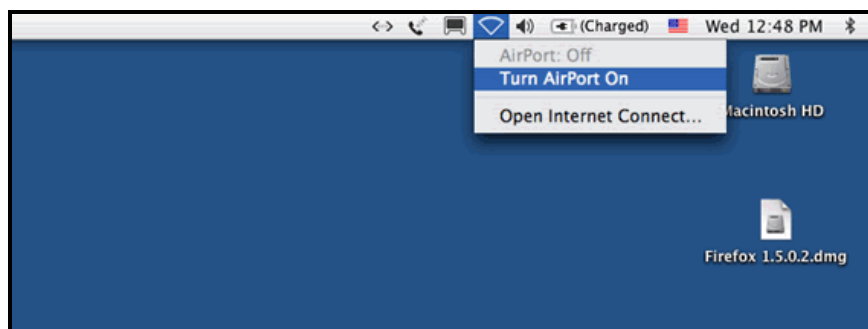
**Step 4: Write the security parameters**

### Requirements.

- Wireless network card that support the standard of security WPA.(the Apple Airport card support the standard WPA).
- System MacOSX 10.3.9 or a more recent version.

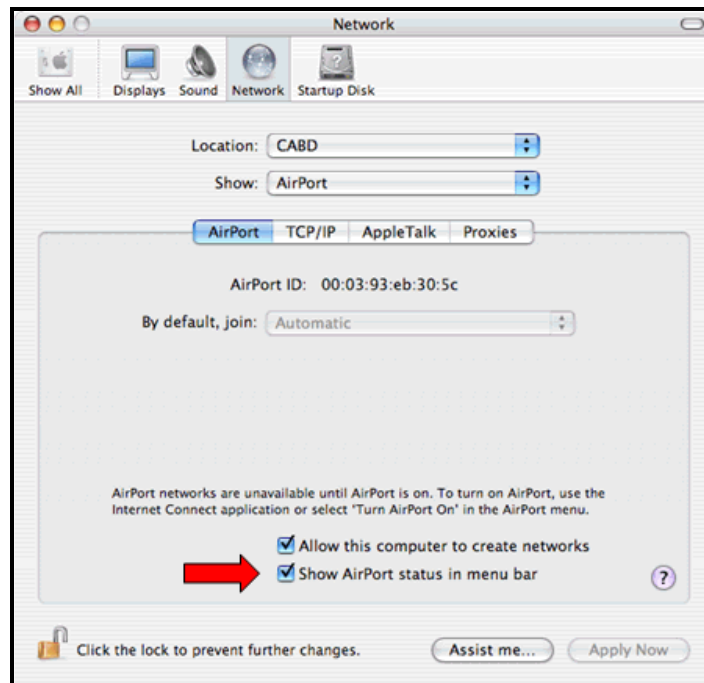
### 2.1. Connect the airport card

In the bar of top menu, click on the *airport* symbol



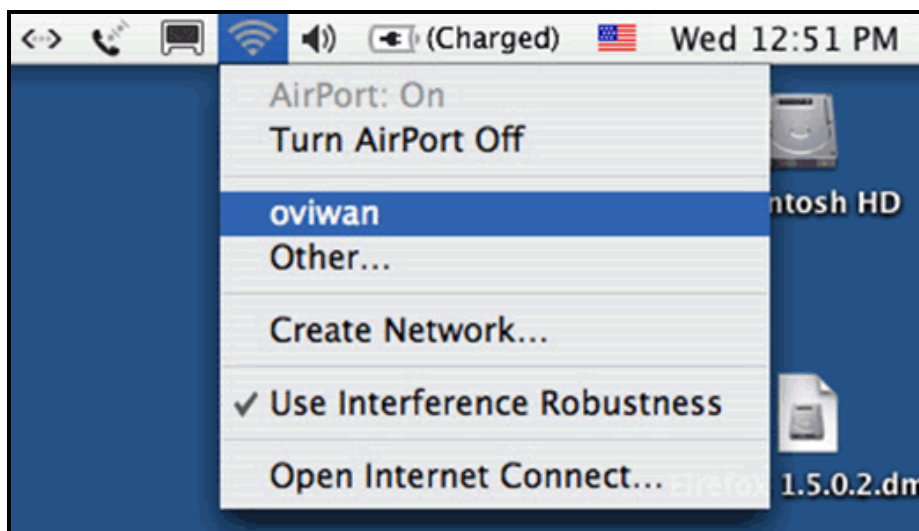
### 2.2. Configuration the airport card

If the airport symbol does not appear, open *Control Panel* and **Network**, and then mark **Show Airport** in the menu bar, next you have to go to *Step 1*



### 2.3. Choose the *oviwan* network

Choose the Oviwan network



## 2.4. Write the security parameters

The Username and password are those used in the University personal services.



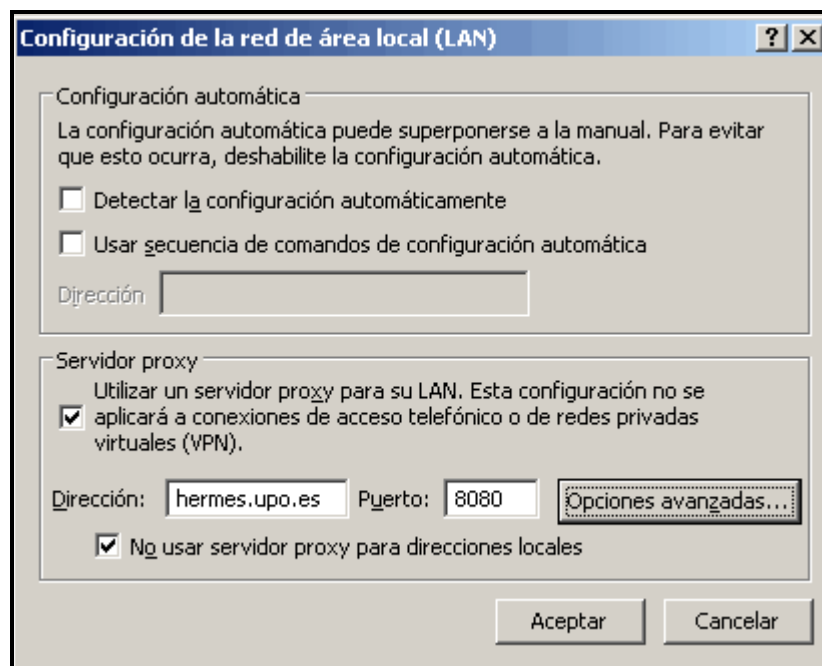
## 3. Proxy configuration in the navigator.

In order to navigate by Internet, is necessary to configure the Proxy Server of University. You can follow the following steps, depending of the navigator you use:

### 3.1. Microsoft Internet Explorer navigator configuration

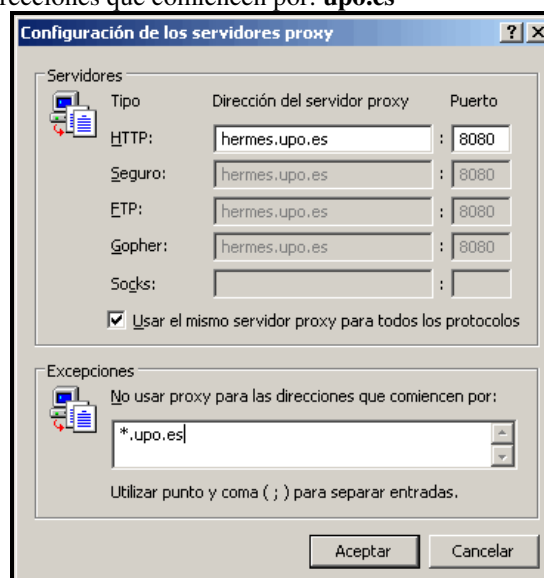
Inside Internet Explorer, select **Herramientas -> Opciones de Internet**, choose the **Conexiones** tab, press on the **Configuración de LAN** button and on the new opened window **Configuración de la red de área local (LAN)** mark *Servidor Proxy* and complete the text boxes:

- In *Dirección* write: **hermes.upo.es**
- In *Puerto* write: **8080**



Press on the **Opciones Avanzadas** button to configure the different services:

- HTTP: **hermes.upo.es**, Puerto: **8080**
- Seguro: **hermes.upo.es**, Puerto: **8080**
- FTP: **hermes.upo.es**, Puerto: **8080**
- Gopher: **hermes.upo.es**, Puerto: **8080**
- No usar proxy para las direcciones que comienzen por: **upo.es**





### 3.2. Mozilla navigator configuration

Inside Mozilla, select **Editar -> Preferencias**. On the **Categoría** menu, select **Avanzadas -> Proxies** and fill the next fields:

- Proxy HTTP: **hermes.upo.es**, Puerto: **8080**
- Proxy SSL: **hermes.upo.es**, Puerto: **8080**
- Proxy FTP: **hermes.upo.es**, Puerto: **8080**
- Proxy Gopher: **hermes.upo.es**, Puerto: **8080**
- No usar proxy para: **upo.es**

