

INFO UPO



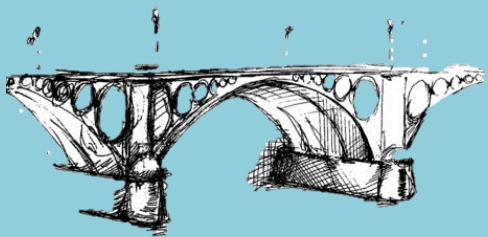
- ✓ **General Information**
- ✓ **Faculties and Schools**
- ✓ **Student Services**
 - **Library**
 - **Sports**
 - **Culture**
 - **Computing and Communications**
 - **Accommodation**
 - **Food services**
- ✓ **Transports**
- ✓ **Map**
- ✓ **Insurances**

STUDY AT UPO

- ✓ **International Relations Office**
- ✓ **Academic offer**
- ✓ **Languages**
- ✓ **Academic calendar**



USEFUL INFORMATION ABOUT THE CITY



- ✓ **Emergencies**
- ✓ **Firemen**
- ✓ **Police**
- ✓ **Hospitals and Health Care Centers**
- ✓ **Electricity**
- ✓ **Post Offices**
- ✓ **Tourist Offices**

INFO UPO

General Information

Name	Universidad Pablo de Olavide
Erasmus Code	E SEVILLA03
Rector	Vicente C. Guzmán Fluja
Vice-rector for International Relations	Isabel Victoria Lucena Cid
International Office's Director	Miguel Ángel Herrera Sánchez
Address	Universidad Pablo de Olavide Área de Relaciones Internacionales Edificio 6, planta baja Carretera Utrera, Km 1 E-41013 SEVILLA
Telephones	+ 34 95 434 93 72
Fax	+ 34 95 434 93 04
E-mail address	erasmus@upo.es
Website	http://www.upo.es/aric/

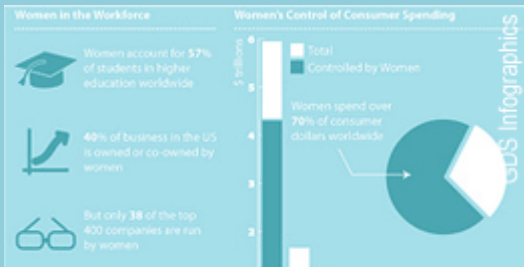
Faculties and Schools



Ciencias del Deporte



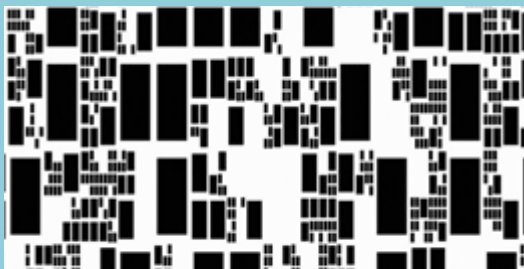
Ciencias Experimentales



Ciencias Empresariales



Ciencias Sociales



Escuela Politécnica Sup.



Derecho



Humanidades



Students services

Library



UPO's Library/Learning Centre is provided with a wide range of facilities and equipment to make possible the consulting, study, research and group work. The building's usable floor area is 14,957 m² distributed in two floors; The reading room on the ground floor counts on 1.159 reading stations, including 84 stations inside of 9 group work rooms. In addition, there are 4 computer rooms available, two being free access, and a multimedia area with 51 computers and 3 multimedia stations, 30 laptops to borrow and Wi-Fi internet access all over the building and surroundings. Concerning the collection, almost 70% are e-resources available in internet.

Opening times	8:30 – 21:00 (Monday-Friday)
Address	Universidad Pablo de Olavide – Biblioteca Carretera de Utrera, km. 1 Edificio 25, Juan Bautista Muñoz 41013 Sevilla (SPAIN)
Website	http://www.upo.es/biblioteca/
Telephones	+34 95 434 9255 / 95 497 8111
Fax	+34 95 434 9257
E-mail	infobib@upo.es

Sports

Pablo de Olavide University's Sports Service is in charge not only of providing opportunities for physical exercise and sports, but also of complementing the educational process of the University community.

All sports activities take place in a wide range of sport complexes. The size of Pablo de Olavide University's campus is 140 hectares, 20 of which 20 are dedicated to sports. These 20 hectares are divided into two:

170.000 m² for sporting equipment.

30.000 m² for the golf-course.

Address	Edificio Celestino Mutis, nº18; planta baja.
Telephones	954 34 83 83
Website	http://www.upo.es/sdupo/
Opening times	Mornings: Monday till Friday, 10 a.m. to 2 p.m. Evenings: Monday till Thursday, 4 p.m. to 6:30 p.m.



Please click on the following link in order to see the sports installations that Pablo de Olavide University students may currently enjoy:

<https://www.upo.es/sdupo/instalaciones/>

Culture

Centre of Attention and Service to the Student (C.A.S.A.) and Information Center for Youngs (C.I.J.)

The Centre for Attention and Service to the Student reports to the Vice rector of Student Affairs. It was created to coordinate services to the University Community, such as information on degrees, socio-cultural activities, workshops, courses and seminars, advertisements and interesting proposals for students, and its publication on the notice-boards, scholarship and grants calls, spare time activities, student card's distribution, etc.

Finally, and in the context of the agreement signed between the Andalusian Youth Institute of the Andalusian Government and Pablo de Olavide University, this University institution is recognised as a Centre for Official Information, through which activities such as campaigns for the prevention of accidents and road safety education take place, as well as actions which promote healthy life habits, and the design of projects to create working fields, among others.



This centre owns a data base with accommodations which lists different flats only for students. You can check it in the following link:

Address	Edificio 18, 1ª planta. (Edificio José Celestino Mutis) Ctra. de Utrera, Km. 1 41013 – SEVILLA
Telephones	954 34 90 86 – 96 00
E-mail	✉ casa@upo.es
Website	https://www.upo.es/portal/impe/web/contenido/49506018-438c-11de-afdd-3fe5a96f4a88?channel=d3563863-2f47-11de-b088-3fe5a96f4a88
Opening times	Monday till Friday: 9.00- 2.00 p.m.

Computing and Communications

Wi-Fi

Pablo de Olavide University has a wide wireless network which allows students to connect to the Internet with laptops from any place on campus, even out of buildings and in free time places.

<https://www.upo.es/cic/servicios/catalogo-servicios/conexion-redes-inalambricas/>

CIC: Building 9, open from 10a.m. to 2:00 p.m and from 4:00 to 6:00 p.m., from Monday until Friday.

Website: <https://www1.upo.es/cic>



WebCT

Our University has a WebCT service which lets students do classwork from any place with an Internet connection. With that, professors can provide students with notes, practical exercises or resolve any questions via chats and forums.

In order to access this service, please use the personal user name and password you will request as it is indicated in the document “Information Procedure” you will receive in few weeks.

<https://campusvirtual.upo.es/>

Computer Rooms

Pablo de Olavide University has 576 computers in different buildings of the campus.

Rooms for Faculties and Schools:

- Building 2: 5 computer labs with 26 places each one (computer for two people).
- Building 3: 1 computer lab with 26 places and 1 with 34 places (1 computer for two people).
- Building 6: 2 computer labs with 54 places each one and 1 with 34 places (1 computer for two people).
- Building 7 (1st floor): 5 computer labs, each with 26 places (1 computer for two people).
- Building 10: 3 computer labs with 46 and 3 more with 30 places respectively on the 1st, 2nd and 3rd floor (1 computer for two people).
- Building 14 (room B.29): 1 multimedia room for the Language Laboratory.
- Building 29: rooms B04, 104 and 204, each with 32 places (1 computer for two people).

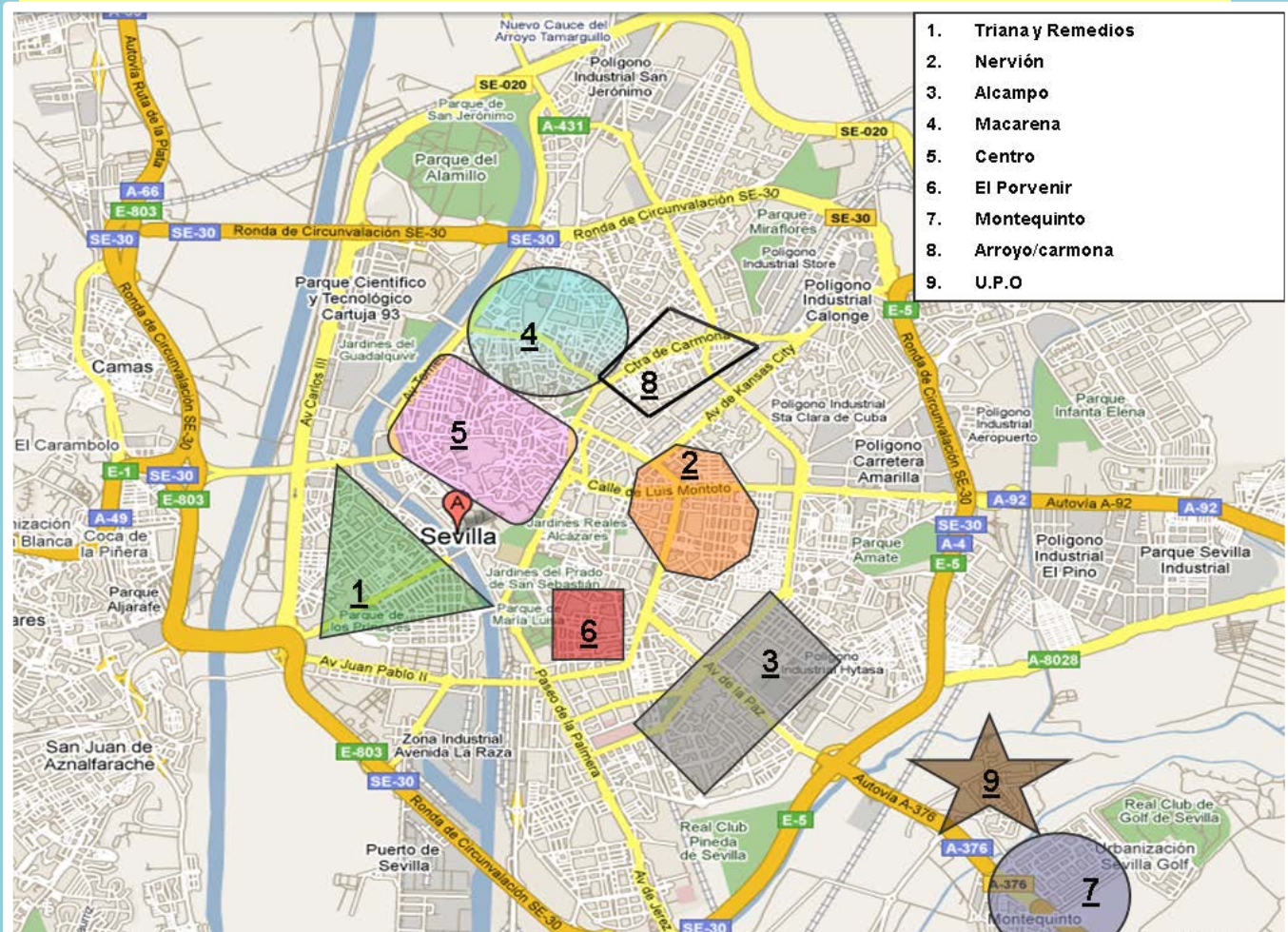
Free access rooms:

- Building 25 (Library): rooms B02, with 34 places, B03 with 42 places and Media Library with 42 places (1 computer for two people).

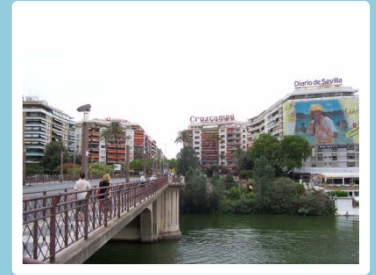
Rooms for PhD students (teaching and free access):

- Building 45 (1st floor): rooms 102, 103 and 104, each with 25 computers.

Accommodation



- These neighborhoods combine local tradition and modern style
- Different types of apartments. Average monthly rates: 500€ - 900€
- Close to the river, a very popular zone
- Good connections with the Metro and walking distance to the city center



2. Nervión:

- Modern apartments -
- Higher prices: 550€ - 1000€ -
- Shopping centers, bars and discos -
- Connections: bus, train and metro -



3. Alcampo:

- Very well connected from and to the university
- Different types of apartments. Rents: 450€ - 600€



4. La Macarena:

- Close to the city center -
- Very good connections with buses -
- Prices between 450 € and 800 € -
- Calm and familiar neighborhood -



5. City center:

- Older apartments
- Close to entertainment areas
- Good connections with bus and metro
- Prices between 550 € and 1000€



6. El Porvenir:



Student and familiar quarter -
Prices between 550€ and 1000€ -

7. Montequinto:

- Very close to UPO by foot
- Modern apartments, 600€ - 800€
- Local bus and metro connection to UPO
- Calm and familiar quarter



8. Calle Arroyo/Carretera Carmona:

- Calm and familiar neighborhood.
- 15 minutes from city center
- Well-connected with buses to all areas
- Rents: 450€ - 750€



Pablo de Olavide's Student Residences

Student's residence "Celestino Mutis"

University Campus

Tel.: +34 954 298 490

E-mail: reservas@campuspatrimonial.es

Website: <http://residenciauniversitariacampus.com/es/residencias/celestino-mutis/>

Student's residence "Flora Tristán"

Barrio de las Letanias (close to campus)

E-mail: trft@admon.upo.es

Tel.: + 34 954 97 8046

Website: <http://www.upo.es/floratristan/>



Flats to rent

Flats to rent or share:

Assistance Service to the University Community (SACU, University of Seville)

Pabellón de Uruguay

Avda. de Chile, s/n

Tel.: 95 448 60 14

Web: <http://sacu.us.es/spp-servicios-alojamiento-pisos>

Accommodation Bourse C.A.S.A

Building 18, 1st floor. (Edificio José Celestino Mutis)

Ctra. de Utrera, Km. 1

41013 – SEVILLA

Tel: 954 34 90 86

✉ casa@upo.es

Web: <http://www.upo.es/portal/impe/web/contenido/20433861-4442-11de-819e-3fe5a96f4a88?channel=e129a629-2f47-11de-b088-3fe5a96f4a88>

Youth hostels

Albergue Juvenil Sevilla

C/ Isaac Peral, 2. 41012 Sevilla

Tel.: 95 5 035 886

<https://www.inturjoven.com/albergues/sevilla/albergue-inturjoven-sevilla>

UPO Food Services

Inside of campus you could find the following food services:



- **Canteen: Building 18, Celestino Mutis.**
Monday til Friday, from 8:00 a.m. to 4:30 p.m.
- Youth menu for students, menus with reduction for students with scholars, 10, 20 and 30 meals tickets.
- **Campus Cafeteria in Plaza de América**
Monday til Friday, from 7:45 a.m. to 9:45 p.m.

Saturday: from 8:00 a.m. to 3:00 p.m.

- Today's menu (*Menú del Día*). Wide variety of nourishments (for soft diets, allergies, low-calories, gluten- free –with prescription).

- Pizzeria Plaza de Andalucía
Breakfasts, sandwiches, pizzas and kebabs.

Transports

Metro

<http://www.metro-sevilla.es/>

The metro service has currently one line and three more projected.

Line 1 has a stop at Pablo de Olavide University, and it goes from Aljarafe to Montequinto, passing through Seville's city center. Line stops:



Stations, trains and ticket machines are adapted for people with disabilities.

Los horarios del metro son:

<http://www.metro-sevilla.es/es/horario>

TARIFFS:

<http://www.metro-sevilla.es/es/billetes-y-tarifas>

Central office: Avda. Luis de Morales, 32. Edificio Forum. Bajo
Tel: 902 364 985; 954 540 785
Fax: 954 546 299
informacion@metrodesevilla.info
Opening hours: Monday til Thursday from 09:00 to 7:00 p.m.

Friday from 09:00 to 3:00 p.m.

Local Buses



Buses from Seville to the UPO

- *Line M130 130 Av. De Portugal-Avenida de Montequinto*

Please find here the line plan:

<http://www.consorciotransportes-sevilla.com/lineasmetropolitanas/pdf/horarios/linea130.pdf>

Tariffs:

<http://www.consorciotransportes-sevilla.com/tarifa.php>

- *Line 38 Prado de San Sebastián – UPO*

Local Buses information - TUSSAM: <http://www.tussam.es>

Special tickets and tariffs:

<http://www.tussam.es/index.php?id=192>

Tickets available in:

- **El Prado de San Sebastián**
- **Plaza Ponce de León**
- **Gran Plaza**

Bus stations

Estación de Autobuses Plaza de Armas

<http://www.autobusesplazadearmas.es/>

Estación de Autobuses Prado de San Sebastián

<https://sevilla.costasur.com/sites/estacion-de-autobuses-prado-de-san-sebastian/es/index.html>

Taxis

Radio-Taxi Giralda tlf. 954 675 555

Radio-Taxi tlf. 954 583 605

Tele-Taxi tlf. 95 462 22 22

Airport

Aeropuerto San Pablo

Tel.: + 34 902 404 704

Airport information: <http://www.aena.es>



Trains



Estación Santa Justa

Tel.: + 34 902 432 343 / 902 240 202

Further information in: <http://www.renfe.es>

Bicycle renting

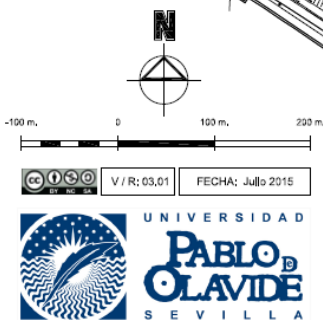
Bicycle is a very comun transport in Seville. City Council of Seville has a Bicycle Renting Service: <http://www.sevici.es>

Tariffs and renting modalitites:

<http://www.sevici.es/abonate/tarifas>

Campus Map

- 2 DECANATOS - UNIDAD DE CENTROS - DEFENSOR UNIVERSITARIO
- 3 ADMINISTRACIÓN CAMPUS - GESTIÓN DE ESPACIOS, EQUIPAMIENTOS Y SERVICIOS (U.G.E.E.S.) - OFICINA DE OBJETOS PERDIDOS
- 6 AREA DE RELACIONES INTERNACIONALES - SALA DE GRADOS
- 7 SERVICIO PREVENCIÓN DE RIESGOS LABORALES - ASESORÍA JURÍDICA - SALA DE GRADOS
- 9 AREA DE INFRAESTRUCTURAS, MANTENIMIENTO Y EFICIENCIA ENERGÉTICA (I.M.E.E.) CENTRO DE INFORMÁTICA Y COMUNICACIONES (C.I.C.)
- 12 AREA DE CONTRATACIÓN - SERVICIOS ECONÓMICOS RECURSOS HUMANOS (RR.HH.)
- 14 CONSEJO DE ESTUDIANTES (C.E.U.P.O.)
- 17 LOCALES COMERCIALES
- 18 UNIDAD DE REGISTRO Y CERTIFICACIONES - ÁREA DE GESTIÓN DE GRADO UNIDAD DE PROMOCIÓN SOCIAL Y CULTURAL - PUNTO DE INFORMACIÓN ÁREA DE ESTUDIANTES - SERVICIO DE IDIOMAS - SERVICIO DE DEPORTES (S.D.U.P.O.)
- 20 CENTRO ANDALUZ DE BIOLÓGIA DEL DESARROLLO (C.A.B.D.)
- 21 SERVICIOS CENTRALES DE INVESTIGACION I
- 25 BIBLIOTECA, CENTRO UNIVERSITARIO INTERNACIONAL (C.U.I.)
- 31 PARANINFO
- 32 EDIFICIO "ROSARIO VALPUESTA" (RECTORADO)
- 44 CENTRO DE INVESTIGACIÓN NO EXPERIMENTAL OFICINA DE TRANSFERENCIA DE RESULTADOS DE INVESTIGACIÓN (O.T.R.I.)
- 45 CENTRO DE ESTUDIOS DE POSTGRADO (C.E.D.E.P.)
- 46 INSTITUTO DE LA GRASA (C.S.I.C.)
- 47 SERVICIOS CENTRALES DE INVESTIGACION II



PLANO GENERAL DE LA UNIVERSIDAD "PABLO DE OLAVIDE".

Insurances

It is highly recommended to provide yourself with a health and liability valid in Spain. UE students have to demand the European Health Card. Please request all the necessary information about the procedure in your home country. The European card allows you to benefit of the national social security.

Other useful insurances: lost, damages or stolen baggages, etc.

Insurance information:

https://www.upo.es/aric/estudiantes_upo/info_seguros/index.jsp

STUDY AT UPO



Área de Relaciones Internacionales y Cooperación (International Relations Office)

The International Relations Office is at your disposal to provide you with the necessary assistance during your stay here:

- **COURSE REGISTRATION:**
All students will be inform about the course registration procedure you have to make after the mobility. There are a limited number of places in groups, so the inscription will be made in strictly inscription order.
- **COURSE REGISTRATION CHANGE:**
During the mobility, a course registration change period will be fixed for you to delete and add courses (if there would be free places).
- **LEARNING AGREEMENT:**
You can come to our office to get your learning agreement signed.
- **CERTIFICATE OF ARRIVAL:**
Your arrival date will be the same as the welcome meeting date you will participate in. If it is impossible for you to come to any of them, please come to our office to inform about your arrival date in order to get your certificate of arrival signed for your home university.
- **CERTIFICATE OF ATTENDANCE:**
At the end of your mobility, you have to come to our office to inform about the departure date and get the certificate personally at the same time.

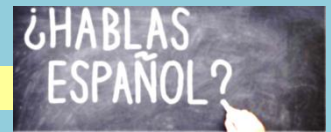
We work every day to make your experience the most successful possible.

Location	Building 6, ground floor, office 22
Timetable	Monday til Friday from 9.00 to 14.00

Academic offer

<https://www1.upo.es/matricula/oferta-academica/>

Language learning



International University Center (C.U.I.)

Spanish intensive course

The CUI offers language intensive courses (1 or 2 weeks length) in all levels for international students before the semester starts. Every course includes different activities. For further information, please follow this link:

www.upo.es/intl - Programas/Lengua Española.

There are some places for free for Erasmus students with A1 level of Spanish. For further information about dates, please write to: intl@upo.es.

Spanish courses during the semester

In addition, the CUI offers 45 hours language courses along every semester (January-May or September-December), two days a week, for all levels and 6 ECTS credits.

Sommer Spanish courses 2018

Three weeks Spanish courses. Two different terms available:

<https://www.upo.es/intl/verano-2017/>

Location	Building 25, Library
Contact	+34 954 97 73 00 www.upo.es/intl / intl@upo.es
Opening times	Monday until Thursday from 8:00 to 6:00 p.m./Friday from 8:00 to 3:00 p.m.
Opening times (July-August)	Monday until Friday, from 9:00 to 2:00 p.m.

Language Centre (*Servicio de idiomas*)



The Language Centre offers the necessary language teaching within European Higher Education. Our objective is to encourage the teaching, development and promotion of foreign languages amongst the different members of our university community.

The levels of each of the languages taught are aligned with the Common European Framework of Reference for Languages (CEFR).

We promote language learning by offering 3-hour/weekly courses during the academic year as well as intensive courses in July and September in English, French, German, Chinese, Japanese and Portuguese. We prepare our students for official exams such as: Acles/Cercles, Cambridge, DELF/DALF, Goethe Institut, DEPLE. Our Language Centre also offers its own exams (English B1, B2, C1 and French B1) which have European recognition (Cercles).

Special discounts are offered to members of our University Community.

We also offer shorter 30-hour courses for the preparation of external official exams as well as 12-hour Exam Technique courses for preparation of our internal exams.

We are an official Exam Preparation Centre and Collaboration Centre for Cambridge Language Assessment. We are also an official centre for TOEIC exams. The Language Centre has a translation service for any members of our community who may need it.

LOCATION: Building 18 (Celestino Mutis), 1st floor.

OPENING HOURS: Monday to Friday from 10 a.m. to 2 p.m. and Tuesday and Thursday from 4.30 to 6.30 p.m.

TIMETABLE DURING REGISTRATION DATES:

Monday to Friday from 9 a.m. to 2 p.m and Tuesday and Thursday from 4.30 to 6.30 p.m.

Address	SERVICIO DE IDIOMAS Edificio 18 (Celestino Mutis), 1 ^a planta Universidad Pablo de Olavide Carretera de Utrera, Km, 1 – 41013 Sevilla
Telephone/email	954 23 82 00 / serviciodeidiomas@upo.es
Website	http://www.upo.es/idiomas
Opening times	Mornings: Monday til Friday from 10.00 to 2.00 p.m. Evenings: Monday til Thursday from de 4.30 a 6.30 p.m.

Academic calendar

You can check it [here](#).

USEFUL INFORMATION ABOUT THE CITY

Emergencies

Central line for emergencies: security, health care, firemen, etc.

Tlf. 112

Firemen

Tlf. 085

Police

Information about police offices in the city center and towns:

https://www.policia.es/depenpol/depenpol_provincia.php?id_region=21&id_provincia=41

Hospitals and Health Care Centers

Social Security

EU students must have the European Health Card or E-111 or E-128 formular to get assistance in the social security health care centers. Non-EU international students will be covered regarding the International Treatments established at this prupose.

Tel. 112

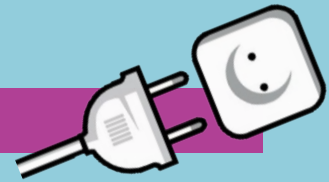
Public hospitals

<http://www.sevillaguia.com/sevillaguia/hospitales/hospitales.htm>

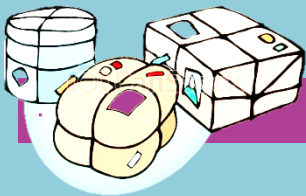
Health Care Centers (primary assistance)

<http://www.sevillaguia.com/sevillaguia/centrossalud/centrosdesalud.htm>

Electricity



In Seville, the electricity is 220 V and two pins sockets. Adaptators are sold in ironmongers.



Post

Post Offices

<http://www.sevillaguia.com/sevillaguia/Correos/Correos.htm>

Other delivery services (national and international)

DHL: <http://www.dhl.es/es.html>

SEUR: <https://www.seur.com/es/index.html>

NACEX: <https://www.nacex.es/irHome.do>

MRW: <http://www.mrw.es/>

TOURLINE: <http://www.tourlineexpress.com/>

Tourist Offices



Where to find tourist information offices in the city:

http://www.andalunet.com/info_sevilla/info.php?op=of