



UNIVERSIDAD
**PABLO^D
OLAVIDE**
S E V I L L A

Centro
Andaluz
de Biología
del Desarrollo



Monitoring neuronal changes and behavior in a neurodegenerative disease model of *C. elegans*

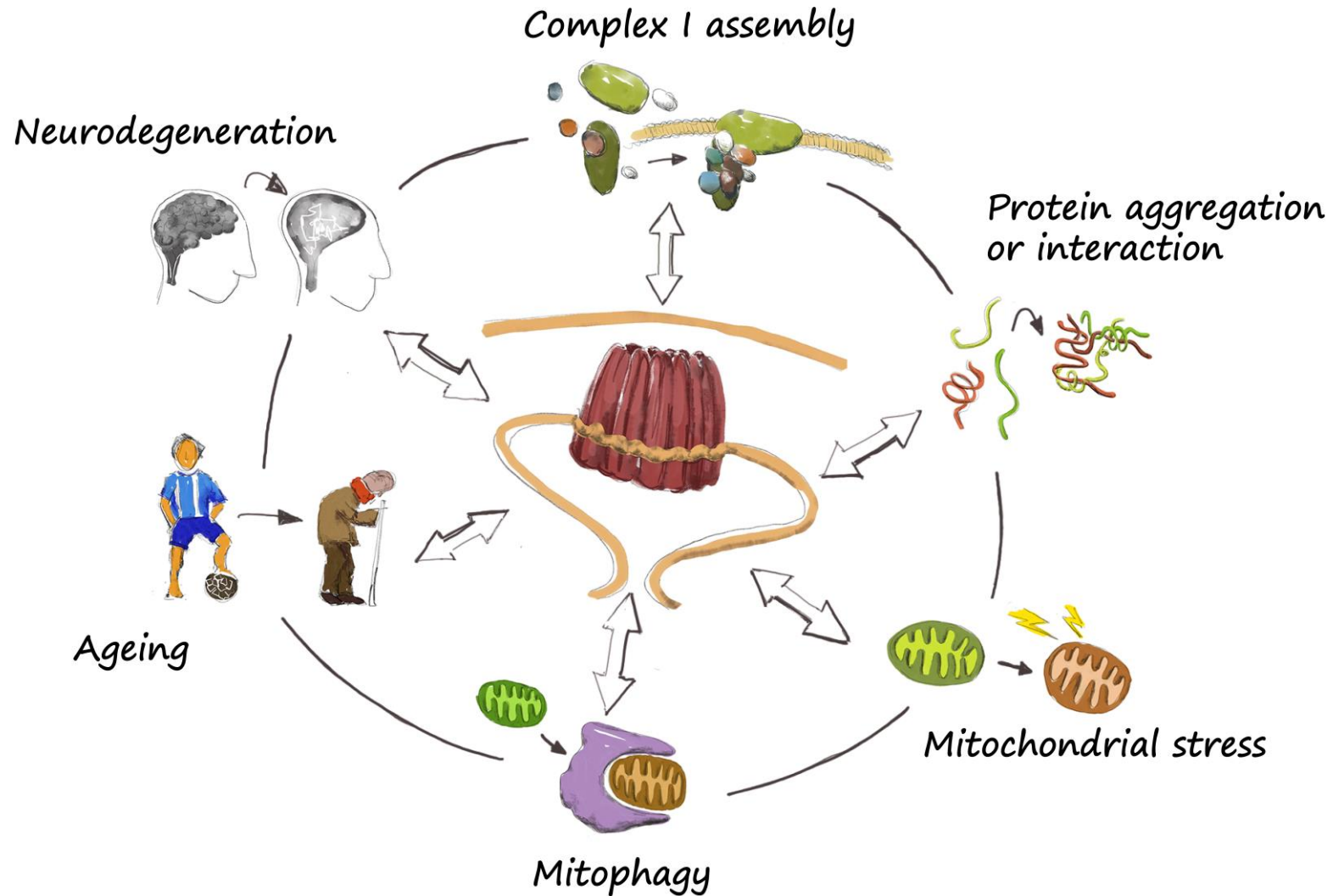
TFG 2023-2024

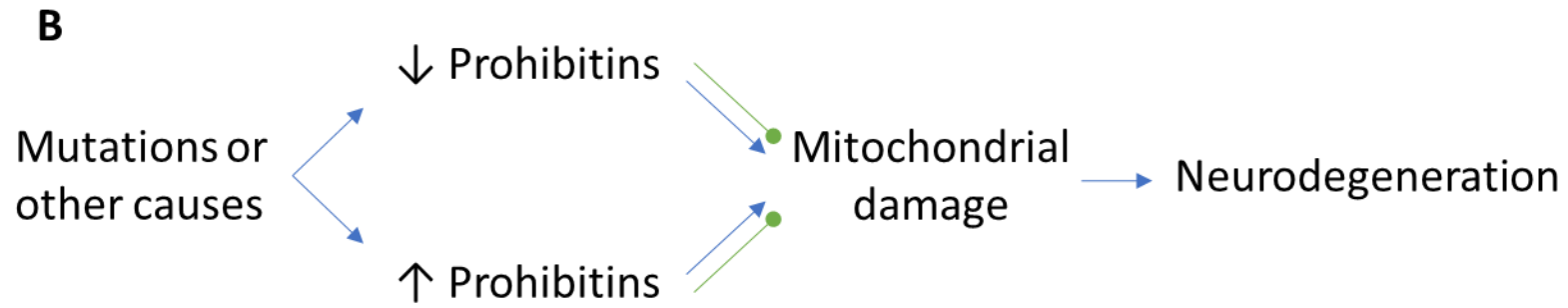
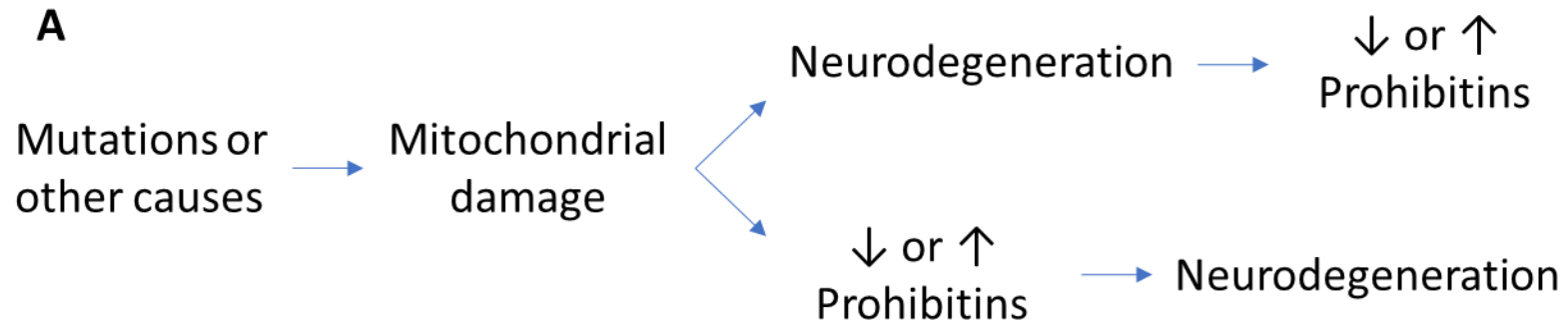
Supervisor: Jesús Fernández Abascal, PhD

jferaba@upo.es

Laboratory of Marta Artal Sanz

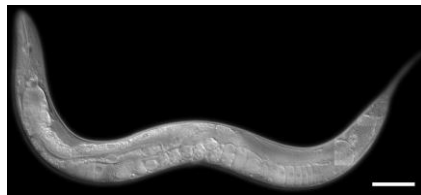
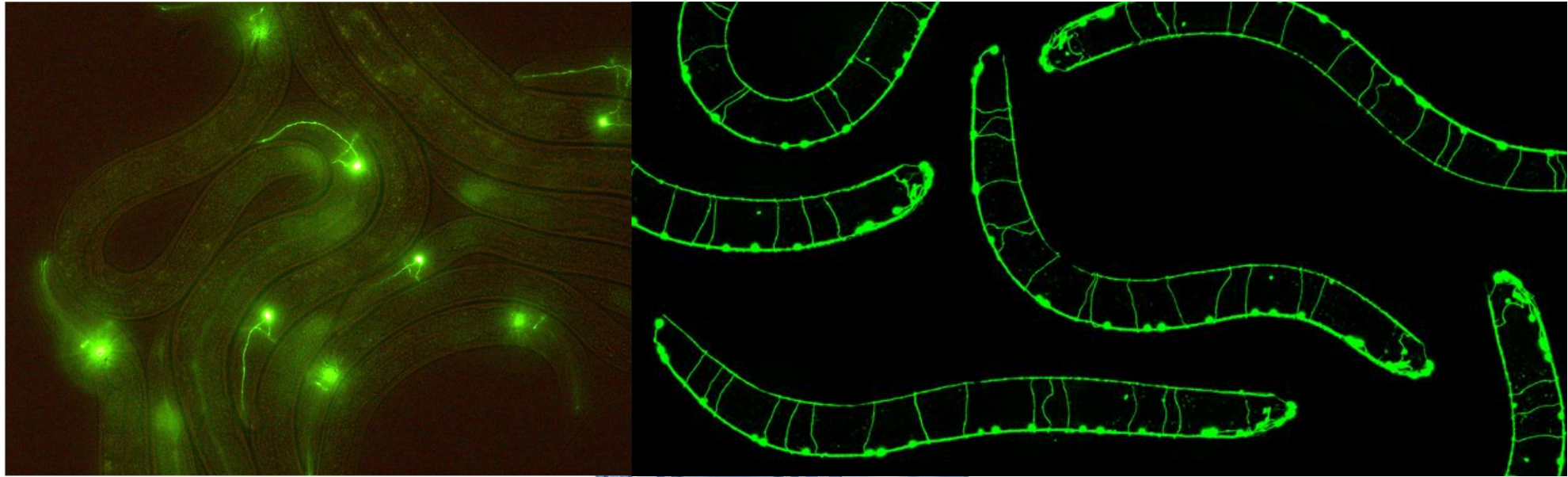
The prohibitins' wheel



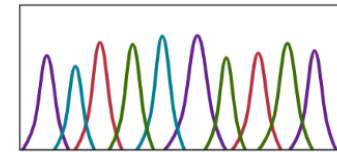
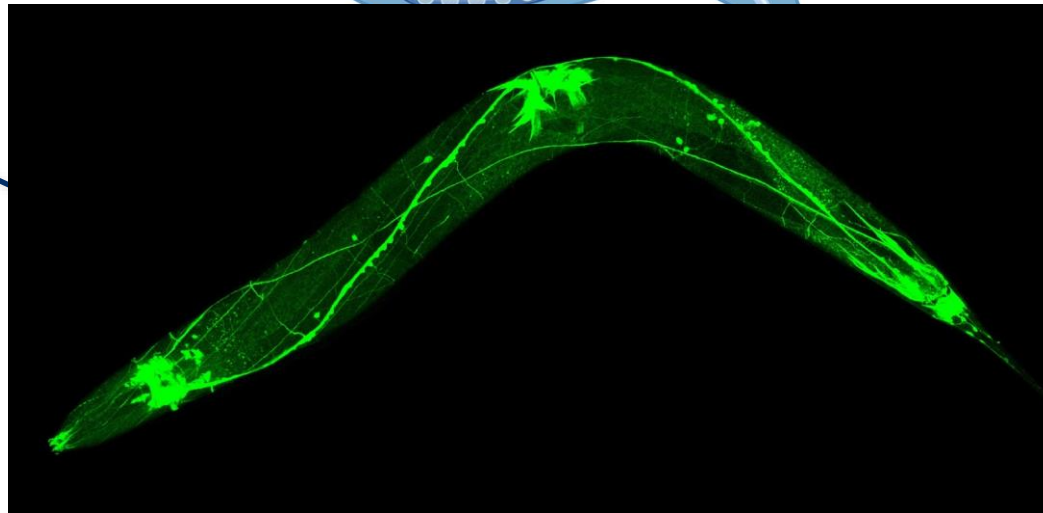


To study the neuronal morphological changes associated with aging and PHB in *C. elegans*

C. elegans as a model organism



Transparent body

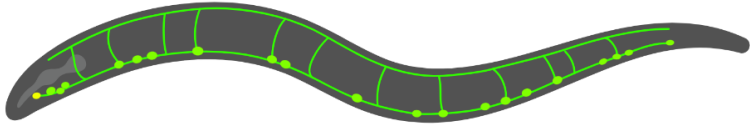


Sequenced genome

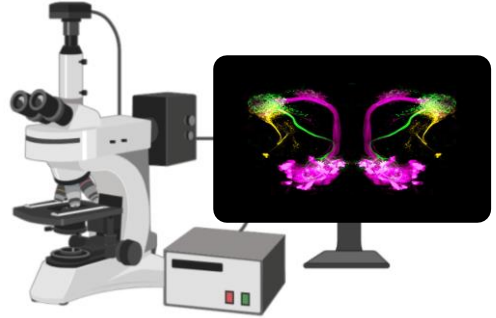
What will you do/learn?



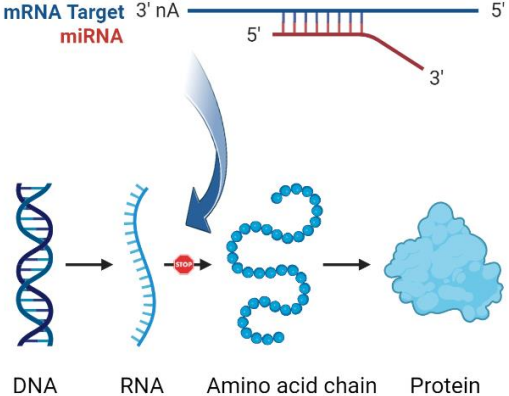
Molecular biology techniques



Generation of fluorescent strains



Morphological characterization



Gene knockdown



Behavior assays

Questions?