



Working papers series

WP ECON 17.09

*Long-run Effects of Public Expenditure on
Poverty*

Marisa Hidalgo Hidalgo
Universidad Pablo de Olavide

Iñigo Iturbe-Ormaetxe
Universidad de Alicante

Keywords: Public expenditure in education, poverty rate, intergenerational transmission of poverty

JEL Classification: H52, I21, I23, J24, J31



Department of Economics

Long-run Effects of Public Expenditure on Poverty*

Marisa Hidalgo-Hidalgo[†] Iñigo Iturbe-Ormaetxe[‡]

July 2017

Abstract

Household characteristics may have long-run effects on individual outcomes in adulthood. For instance, individuals who lived when young in households experiencing financial problems are more likely to be poor when adults. Governments try to reduce these effects and to promote equality of opportunity. The objective of this paper is to check whether public expenditure has a long-run effect in reducing the probability of being poor when adult, and to what extent. Our main finding is that public expenditure in education has a strong long-run effect on reducing incidence of poverty in adulthood. We also find that this effect is concentrated mainly among individuals who have parents with a low level of education.

Keywords: Public expenditure in education, poverty rate, intergenerational transmission of poverty

JEL Classification: H52, I21, I23, J24, J31.

*We thank Pedro Albarrán, M. Dolores Collado, Laura Crespo and Christophe Muller for helpful comments. We thank participants at Fifth ECINEQ Meeting, 2013 ASSET Meeting, XXXIII Simposio de Análisis Económico and Universitat de les Illes Balears. Marisa would like to thank CREST Paris, where part of this research was carried out, for their hospitality. Financial support from Ministerio de Economía y Competitividad (ECO2014-57413, ECO2012-34928 and ECO2015-65820-P (MINECO/FEDER)), Generalitat Valenciana (Prometeo/2013/037), Junta de Andalucía (SEJ-4941, SEJ-5980) and Instituto Valenciano de Investigaciones Económicas (IVIE) is gratefully acknowledged.

[†]**Address for correspondence:** M. Hidalgo Hidalgo, Departamento de Economía (Area de Análisis Económico), Universidad Pablo de Olavide, Ctra. Utrera, Km.1, E-41013, Sevilla, Spain, mhidalgo@upo.es

[‡]I. Iturbe-Ormaetxe, Universidad de Alicante, Alicante, Spain, iturbe@ua.es

1 Introduction

There is a growing literature documenting how inequality has increased during the last decades in many developed countries (see Piketty, 2014 or Atkinson, 2010 for the EU; Atkinson *et al.*, 2011 or Jenkins *et al.*, 2013 for the US). For instance, in most OECD countries the gap between the rich and the poor has widened continuously prior to 2008 (OECD, 2011). In addition, recent OECD data (OECD, 2013) show that the global economic crisis has reduced incomes in most countries. However, this reduction is not shared evenly across the two extremes of the income distribution as there are larger reductions at the bottom part of the distribution. This fact suggests further increases in inequality and poverty. It is also well-known that living in poverty during childhood has long-run negative effects. Children from poor families are more likely to be poor when adults, are also more prone to suffer health problems, and less likely to stay at school after compulsory education (see Corak, 2006 or Jenkins and Siedler, 2007 and references therein). These long-run effects reflect the degree of intergenerational mobility in a society. In countries where social mobility is low, being poor when young is a good predictor of the probability of being poor when adult.

There are two plausible mechanisms underlying the intergenerational transmission of poverty. First, there may be genetic differences in ability that are transmitted from parents to children leading to intergenerational persistence in poverty. Second, rich parents invest more in the human capital of their children who end up with more education. This second mechanism suggests a role for government intervention to equalize opportunities. In particular, public intervention at early stages is seen as one of the most important tools to reduce these long-run effects of poverty and to promote equality of opportunity.

Our objective is to estimate the effects of public expenditure on poverty status in adulthood in Europe. The notion of poverty used is income-based, reflecting the main approach in the literature.¹ In order to do so, we combine individual and aggregate variables by merging data from the 2005 and 2011 cross sections of the European Union Statistics on Income and Living Conditions (EU-SILC) with data on public expenditure that we retrieve from the United Nations Educational, Scientific and Cultural Organization (UNESCO) database. The 2005 and 2011 cross sections of EU-SILC include a special module on “Intergenerational transmission of poverty.” The database we construct allow us to analyze which factors contribute to cross-country and cohort differences in the probability of falling below the poverty

¹As measures of social exclusion, material deprivation and material hardship are becoming more and more available, the concept of multidimensional poverty is increasingly used. For instance, Figari (2012) analyses the relationship between deprivation, income and other individual dimensions over time, in eleven European countries. For an overview of this literature see Morelli *et al.* (2015) or Nolan and Marx (2009).

line. Ideally, we would like to have data on all categories of public expenditure, in particular those items that can be categorized as expenditure in children. We would also need data on public expenditure covering a period of time as long as possible. These two requirements lead us to use data on public spending dedicated to education. In particular, we have data on public spending in education since 1971 that are disaggregated at three levels (primary, secondary, tertiary) for a number of European countries. This could be seen as a potential drawback of our approach, since any effect that we may find of public expenditure on adult poverty status could be attributable not to spending in education per se, but to public spending in general. However, in a previous work Mayer and Lopoo (2008) study for the USA the long run effect of public spending in a model of intergenerational income mobility. They find that intergenerational mobility is greater in high-spending states, compared to low-spending states. Interestingly, when they disaggregate by categories of spending they find that spending in primary and secondary education is the public spending that has the largest impact on low-income children's future income. Regarding the period of time for which we have available data on spending, the oldest data go back to 1971 allowing us to consider individuals born from 1954. We follow an approach similar to that of Mayer and Lopoo (2008) and try several definitions of per capita expenditure to capture the level of public investment per individual. First, we assign to each individual average expenditure per pupil at the three levels when the individual was between the ages of 15 and 17. Next, we consider other more restrictive definitions as the sum of expenditure per pupil only in primary and secondary education, and the expenditure at each level separately.

The first result we get is that expenditure in primary and secondary education seem to have a strong long-run effect on reducing the incidence of poverty in adulthood. As an illustration, an increase in one standard deviation in expenditure in secondary education is associated with a reduction of 0.61 percentage points in adult poverty, which is an important reduction as it represents 5% of the mean poverty rate (12.11). This association between public expenditure and poverty vanishes when we consider expenditure in tertiary education. Next, we compute the effects of expenditure for different sub-groups of individuals according to the characteristics of the family in which they were raised. In particular, we divide individuals into two groups depending on the level of education of their parents. Our second result is that the beneficial effect of public expenditure on education is concentrated mostly among individuals with low-educated parents. This result holds for most of the models we estimate. For instance, an increase in expenditure in secondary education of the size of one standard deviation is associated with a reduction of 1.24 percentage points in the incidence of poverty in adulthood for children from low-educated families. At the same time we find

that expenditure is positively associated with adult poverty for individuals from educated families. This result points out that the effects of public expenditure are coming through individuals whose parents had low levels of education. A likely implication is that public expenditure helps to increase intergenerational mobility.

The effects we have obtained can be explained by a simple human capital model in which individuals' outcomes today are a function of both their own endowments and of human capital investments received while young. For instance, an increase in public expenditure may push some individuals to undertake post-compulsory education. This, in turn, may reduce the probability of being below the poverty line when adults. There are several works documenting a positive effect of education spending on later outcomes. Some studies find a positive effects on test scores (see Hedges *et al.*, 1992) whereas others do not find a significant impact (see Hanushek, 1996, 2001). Grogger (1996) finds that state per-pupil spending on compulsory education is associated with higher post-schooling wages. Within this literature, there are other authors who use alternative identification strategies. For example, Meghir and Palme (2005) evaluate the impact of a school reform, that took place in the 1950s in Sweden on educational attainment and earnings. This reform consisted of increasing compulsory schooling, among other aspects, and thus can be seen as an increase in per capita public expenditure on education. They find that this reform increased both educational attainment and earnings of those individuals whose fathers had just compulsory education.

Our identification strategy to assess the impact of government spending on individual's poverty status consists of exploiting country and time variation in expenditure. We identify the effect of public intervention by exploiting changes in spending across countries from the initial period in our sample. As different countries experience different economic situations that might have different effects on different cohorts, we also control for other country-cohort variables as per capita GDP and income inequality during childhood. However, there are many other factors that may have changed within particular countries between the time the individual was a teenager and the expenditure was made and the moment when poverty status is determined. To address this problem we include the *change* in per capita GDP and the *change* in our measure of inequality from the time the individual was 15-17 until the year of survey response, respectively. These two additional variables capture country-specific time trends. Finally we perform a number of robustness checks. In particular we check the validity of our results to alternative measures of parental circumstances and current poverty status and to alternative specifications of the model. We also implemented a falsification exercise for the exposure to public expenditure.

The paper is related to the literature that studies the long-run effects of government

spending on adult outcomes as income or poverty. The most closely related papers to ours are Mayer and Lopoo (2008) mentioned above and Jackson *et al.* (2016). The former assess the relationship between government spending and intergenerational economic mobility using PSID data together with data on state spending from the U.S. Census of Governments. The latter also uses US data and finds a significant effect of increased school spending on children from poor families. In particular, they find that an increase of a 10% in expenditure for all years of K-12 education reduces the incidence of adult poverty by 3.2 percentage points.

In addition to public expenditure, the previous literature has shown that individuals' socioeconomic background is also a crucial determinant of adult poverty. There is substantial evidence that poverty is inherited (to a great level) across generations. Recently, Bellani and Bia (2016) using also data from EU-SILC 2005 and 2011 find that exposure to poverty in childhood reduces equivalized income in adulthood by about 5% and increases the probability of falling below the poverty threshold by about 6 percentage points. For a the review on this literature see Jäntti and Jenkins (2014). While experiencing financial problems during childhood is shown to have a strong impact on poverty in adulthood, other dimensions of family background, as parental education, are associated with future poverty. For example, Corcoran and Adams (1997) were among the first studies that attempted to separate the impact of poverty during childhood from other family background characteristics (such as parental schooling). Blanden and Gregg (2004) perform a similar study. Both studies found that individuals with better educated parents are less likely to be poor themselves. Hertz *et al.* (2007) report strong correlations between schooling of parents and children for many countries. Holmlund *et al.* (2011) provide a survey on the different methodologies used to study the causal effect of parent's schooling on children's schooling. Recently, Piopiunik (2014) suggests that the channel of this relationship could be that parents with more education value good school performance of their children more highly and they are more likely to believe that schooling is good for them. Finally, see Marx *et al.* (2014) for a recent survey of these types of studies. In this paper we control for the role of parental background while studying the long-run effect of public expenditure on adult poverty.

Our paper contributes to the literature in several respects. First, we focus on intergenerational poverty transmission rather than on transmission of income, as most of this literature does. Surprisingly, there is almost no evidence on the potential mitigating effect of public expenditure on poverty, despite the recent trends in poverty and income inequality. Second, we focus on a group of European countries using data from the EU-SILC. Finally, we also add to this debate by using a more narrowly defined measure of expenditure on children schooling.

The paper is organized as follows. Section 2 describes the data used in the paper. Section 3 presents the empirical model. We discuss our empirical results in Section 4. Finally, Section 5 concludes.

2 Data and descriptive statistics

Estimating whether government expenditure has a long-term effect on reducing poverty requires individual-level data on adult's income together with information on the characteristics of the household where that adult grew up. It also requires a source of variation in government expenditure. In this study we merge data drawn from both the 2005 and 2011 cross sections of the EU-SILC database with data from the UNESCO database for Education. We build a database comprising 16 European countries. These are the countries in the EU-SILC database for which we have enough historical data on public expenditure.²

The reason for using the 2005 and 2011 cross sections of the EU-SILC database is that they include special modules on inter-generational transmission of poverty.³ Using these modules requires to exclude from the 2005 and 2011 cross sections all individuals who are not in the age range of the module (25-65) or are not the selected respondent. These modules contain retrospective information on parental background and childhood circumstances including, in particular, family composition, year of birth of parents, occupation and level of education of parents. To assess the long-run effect of household characteristics, we exclude all individuals who lived in a collective house or in some institution when young. Individuals also provide retrospective information about the socio-economic situation in the household when teenagers. All these variables give us valuable information on individual circumstances that happened by the end of compulsory education. Individuals report the highest level of education attained by the mother and the father. We summarize this information building a dummy variable called “*educated_family*” that takes value 1 when either the mother or the father has at least secondary education.⁴ We have also explored the possibility of introducing parental education in several other manners (see the Online Appendix, Section A). As can be observed there, our main results do not depend on how parental education is defined. In addition to parental education, we consider a set of household characteristics when the

²The list of countries is: Austria, Belgium, Denmark, Finland, France, Greece, Hungary, Ireland, Italy, Luxembourg, Netherlands, Norway, Portugal, Spain, Sweden and United Kingdom.

³For an overview of EU-SILC, see Wolff *et al.* (2010). To access further information about EU's regulations concerning the SILC, data documentation provided by Eurostat, and SILC variable lists, we recommend the EU-SILC web portal provided by the GESIS research institute at <http://www.gesis.org/>.

⁴The mean value of *educated-family* is .355 (st. dev. is .478). Requiring tertiary education would be too restrictive, since only a 11.68% of individuals in the sample have at least one parent with tertiary education.

individual was young (unemployed father, number of siblings, single mother family, etc.).⁵ See Section F in the Online Appendix where we check the validity of our results to alternative measures of childhood circumstances.

As we said above, we obtain data on public expenditure from the UNESCO Database for Education. The UNESCO Database for Education contains country data on annual public expenditure in education per student going back to 1971, although in some countries there are missing data for some years. The original data correspond to percentages of per capita GDP at three levels (primary, secondary, tertiary). We use data on per capita GDP to recover data on expenditure in primary, secondary and tertiary education for each country and year. We also use data on Purchasing Power Parities from the World Bank.⁶ Since data on per capita GDP are in US dollars of year 2000, all our data on expenditure per individual have the same purchasing power in terms of 2000 US dollars. Our data cover the period from 1971 to 2008, for which we have 608 distinct country-year cells.⁷

We propose different ways of measuring per child expenditure. We follow previous research on the long-run impact that has public expenditure on adult circumstances using different combinations of per pupil public education expenditure as proxies of public expenditure.⁸ We exclude from our sample all individuals who were not born in the country of residence at the time of the survey (we do not know whether they attended education in a different country).

The first measure we consider adds expenditure at the three educational levels and takes the average of these expenditures for the country of residence when the child was of age 15 to 17. This allows us to study the effect of public expenditure made before the age at which individuals may join the labor market. We think of our measure as a proxy for general public expenditure, more than a measure of public expenditure in education. As an example, consider the case of an individual born in Spain in 1960. She was 16 in 1976. The sum of public spending per capita at the three levels in Spain in 1976 was \$3,558.57. The corresponding numbers for 1975 (when 15) and 1977 (when 17) are \$3,415.94 and \$3,517.64, respectively. We assign to this individual the average of these three numbers, namely \$3,497.38. By doing

⁵We do not use information on parents occupation, since these variables contain a large fraction of missing values.

⁶See <http://www.uis.unesco.org/Education/Pages/default.aspx> and <http://data.worldbank.org/> for data on public expenditure in education and PPP, respectively.

⁷Since our sample contains 16 countries, in principle we could have data for the three educational levels corresponding to $16 \times 38 = 608$ distinct country-year cells. However, we lack data corresponding to 115 of these cells. This can be due to the fact that UNESCO did not collect data every year in every country. We use a simple linear interpolation to smooth expenditure data. We cannot do this when missing data for a given country correspond to the first or the last years of the period considered. As an example, data for Belgium are only from 1975 onwards while for Spain they are from 1972.

⁸See Akin and Garfinkel (1980), Grogger (1996), or Mayer and Lopoo (2008).

so we get a smoother measure of expenditure than just considering expenditure at age 16 only for instance. Our second measure is similar to the first one, but adds only expenditure at primary and secondary education. With this second measure we try to capture expenditure at the compulsory levels of education which could be a better measure of the level of public spending from which all individuals have benefitted. We also consider expenditure separately at each one of the three levels. By doing this, we try to see which one of the three components of government exhibits the strongest association with poverty reduction. Observe that our measure of public expenditure is not the exact amount individuals received while they attended primary, secondary or tertiary education. In that case, and in particular regarding expenditure in tertiary education, the amount of public expenditure assigned to each individual would depend on his (endogenous) decision of college attendance, which is highly correlated with parental education (see, for example, Piopiunik, 2014 for recent evidence on the causal link between parents and children's education). Thus, by constructing our measure in this way we avoid introducing bias on the impact of public expenditure on future poverty status. Since our oldest data on public spending go back to 1971, we have to restrict our sample to individuals born between 1954 and 1980 (2005 cross section) and between 1954 and 1985 (2011 cross section).⁹ This means the age range in our sample goes from 25 to 57. The reason to choose expenditure when individuals were 15-17 is to have the largest possible sample size. An individual born in 1954 was 17 in 1971, and so we can assign him/her some expenditure in that year. In addition similar studies as Mayer and Lopoo (2008) use the same age interval. Nevertheless we redo the exercise considering public expenditure earlier in life. In particular, we choose expenditure when the individual was aged 10-12. Now the earliest cohort would be that of 1959 which implies we lose five birth cohorts (1954-1958) with a sizable reduction in sample size (see Table 5). Our results remain qualitatively the same, although we lose significance in some models as we comment below. Our final sample consists of 163,159 individuals from 16 countries. A 47.89% belong to the 2005 wave (78,138 individuals) and the remaining 52.11% (85,021 individuals) to the 2011 wave.

Our objective is to study whether public expenditure helps to mitigate the effects on adult circumstances of being raised in a disadvantaged household. In particular, we focus on individual's current poverty status.¹⁰ This is the information contained in the variable

⁹With our measure, for those born in 1954 we assign public spending in 1971 (they are 17 in 1971) only, while for those born in 1955 we assign the average of public spending in 1971 and 1972 (they are 16 and 17, respectively).

¹⁰In Online Appendix, Section F, we perform some robustness checks to alternative definitions of monetary poverty, in particular considering other income sources.

HX080, which is an indicator of whether the individual lives in a family with income below the poverty threshold.¹¹ We define a dummy variable called “*poor*” which is 1 whenever HX080 is 1. This is a standard poverty measure and the official one in the European Union.¹² The mean value of *poor* in our final sample is 12.11%. It takes the same value in both waves. Figure 1 represents the percentage of individuals below the poverty line in each country.

Figure 1

The maximum value corresponds to Greece (18.6%) and the minimum to Denmark (3.6%). The dotted line is the mean value for the whole sample. It is important to remember that these numbers are not representative of the whole population, since we are considering only those individuals who at the time of the survey were 25-51 in the 2005 wave or 25-57 in the 2011 wave. In particular, the elderly are excluded from our sample. Table 1 shows the main descriptive statistics. A complete description of all the variables we use can be found in the Appendix.

Table 1

Table 2 below illustrates the correlation between current poverty status and family background, as measured by parental education. We compute probabilities for the current poverty status (variable *poor*), conditional on the two possible values of the variable *educated_family*. We also provide their corresponding standard deviations. We do it separately for the two cross sections and also pooling all the data. As Table 2 shows, there is a strong association between these two variables.

¹¹The poverty line corresponds to 60% of equivalized household disposable income and corresponds to the standard measure of poverty in the European Union. Equivalized household disposable income (HX090) is equal to the product of total disposable household income (HY020), multiplied by an inflation factor for within-household non-response (HY025), divided by equivalized household size (HX050). That is, $HX090 = \frac{HY020 * HY025}{HX050}$.

¹²See http://ec.europa.eu/eurostat/statistics-explained/index.php/Glossary:At-risk-of-poverty_rate

Table 2: Long-run effects of parental education

	Poor 2005		Poor 2011		Poor All	
	Mean	SD	Mean	SD	Mean	SD
educated_family=0	15.04	0.36	15.37	0.36	15.21	0.36
educated_family=1	6.14	0.24	6.59	0.25	6.40	0.24
Difference test <i>p</i> -value	<0.0001		<0.0001		<0.0001	
All	12.11	0.33	12.11	0.33	12.11	0.33

In the 2005 cross section (Column 1 in the table), the proportion of individuals who had low-educated parents that are below the poverty line is 15.04%. However, for those individuals with educated parents this probability is just 6.14%. We find similar differences in the 2011 cross section (15.37% vs. 6.59%) and with the two cross sections combined (15.21% vs. 6.40%). So, roughly speaking, the probability of being below the poverty line for individuals without educated parents is twice as big, compared with that of individuals with educated parents.¹³ We illustrate these correlations at the country level in the online Appendix, Section B.

Finally we briefly describe the connection at the country level between expenditure and poverty by family type. In order to do so, we compute poverty rates according to the education of parents for each country. We use the average value of one of our measures of spending per individual (in logs), in particular our first measure of public expenditure that adds expenditure across the three educational levels (primary, secondary and tertiary) for the country of residence when the child was of age 15 to 17. As we have already seen in Table 2, poverty rates are typically higher among individuals with non-educated parents. Figure 2 shows poverty rates for these two groups as a function of average public expenditure. We fit a line for each group. We see that higher expenditure is associated with lower poverty rates mostly for individuals whose parents have a low education level.¹⁴

Figure 2

In the paper we analyze whether these relationships observed at the country level still hold at the individual level.

¹³The t-statistics for the difference in mean poverty between individuals without educated parents and with educated parents are equal to 35.96, 41.13 and 54.54 for the 2005, 2011 and the all sample respectively.

¹⁴The slope of the line corresponding to individuals with parents with low education is -.085 (p-value 0.004), while the one corresponding to individuals with highly educated parents is -.013 (p-value 0.228).

3 Empirical model

Our aim is to study the effect that has public expenditure on reducing the long-run negative effects of having a disadvantaged background when young. The relationship of interest between public expenditure and poverty status is given by the following equation:

$$POOR_i = \beta_0 + \beta_1 PE_{ct} + \beta_2 ED_FAM_i + \beta_3 (PE_{ct} \times ED_FAM_i) + X_i \gamma + \beta_c + \beta_t + \varepsilon_i, \quad (1)$$

where $POOR_i$ is an indicator that equals 1 if individual i lives in a household that has disposable income below the poverty line. The variable PE_{ct} is the logarithm of our measure of public spending per capita corresponding to an individual from country c born in year t .¹⁵ We try with different measures of public spending, as described above. The variable ED_FAM_i is a dummy variable capturing parental education. We add an interaction term of this dummy variable with public expenditure to test whether individuals that grew up in families in which both parents had little education benefit differently from public expenditure, compared to other individuals. We include country fixed effects in the model, captured by the term β_c which contains a set of dummy variables, to control for invariant factors within countries. We include a time trend captured by the parameter β_t that represents a vector of year of birth indicator variables. In particular, it addresses a possible common time trend toward increasing public expenditure. Because of the structure of our data, we cannot include country-specific time trends since these ones would be perfectly correlated with our measures of public expenditure. Recall that we assign the same value of expenditure to all individuals who were born in the same year and country. However, below we include two additional regressors that help to capture country-specific time trends.

The vector X_i contains the remaining explanatory variables, apart from parents' education. First, there are variables describing current circumstances (gender, non-citizen status, date of survey). Second, we include a set of family background variables that were determined well before schooling was completed. We include number of siblings, having been raised in a single-mother family and whether the father was unemployed at that time. Third, we add some country-cohort specific variables. In particular, we control for per capita GDP at the time the individual benefitted from each particular measure of PE . By doing so, we

¹⁵We could alternatively consider the ratio of expenditure over GDP as our main regressor of interest (see Hidalgo-Hidalgo and Iturbe-Ormaetxe (2013) for a similar strategy). However, we choose our approach for two reasons. First, it is a more general specification (observe that using the ratio implies restricting the effect of $\ln(GDP)$ to be the mirror effect of $\ln(PE)$). Second, it provides a more clear interpretation of results (since a large value in this ratio can be due either to high spending or to low per head GDP). Nevertheless we have also estimated a model using the ratio and find results in line with the ones in the paper. We do not show these results here for space reasons but are available upon request.

relate education expenditure to the level of living of the country. We do not do this, the impact of expenditure in education might be biased. Rich countries raise more revenue from taxes and can dedicate more resources to education. At the same time, they have lower poverty rates. Then, the impact of public expenditure in education would be overestimated. In particular, we add a variable called GDP_{ct} that represents the logarithm of average per capita GDP when the individual was of age 15 to 17. Not surprisingly, the two variables PE and GDP are strongly correlated.¹⁶ However, this is not a problem because of our large sample size. Fourth, we also include a measure of “initial inequality” (denoted by $INEQ_{ct}$). The idea is that countries with larger amounts of public expenditure may have unobserved characteristics (for instance, inequality levels) that correlate with both those levels of spending and current individual poverty status. If these inequality levels are positively correlated with current individual poverty, then our results would be overestimating the true impact of public spending (as measured here). For example, more unequal countries may spend more on other long term inequality-reduction policies (not captured in the measured proposed in the paper) which reduces individuals’ probability of being poor when adults. However, these inequality levels might also be negatively correlated with individuals’ current poverty status. For example, if some forms of expenditure are entitlements, those countries that are initially more unequal might need to spend more than countries with fewer poor families. In that case, our results would be underestimating the true impact of public spending on poverty reduction. Thus, it is very difficult to establish a priori the sign and magnitude of the bias if we do not account for this effect.¹⁷ Similarly to the case of GDP , we assign to each individual the average value of the Gini indexes in her country at the time she benefitted from each particular measure of PE . Note that both GDP_{ct} and $INEQ_{ct}$ take a different value for every combination of year of birth and country. They reflect initial circumstances that may have a long-run effect later in life.¹⁸

The crucial issue for identification is the assumption regarding exogeneity of public expenditure. Variation in this measure arises because of differences in expenditure across countries at the same point in time and differences in country expenditure over time. Either difference could be partly endogenous with respect to the poverty rate and related to both country

¹⁶The correlation coefficient is 0.66 when we consider our first measure of expenditure per capita, the one that adds expenditure at the three levels.

¹⁷There is some evidence in the related literature on that. For example, Sylwester (2000), in a cross-country analysis finds that higher levels of initial income inequality are associated with higher public education expenditure. See also, Corak (2006) or Marx et al (2014) for additional discussion on the relationship between inequality and social policies.

¹⁸In the online Appendix, Section F, we check whether public expenditure has a similar impact on poverty reduction regardless of some contextual variables as country GDP or inequality. Results are very similar to the ones found for the main specification.

expenditure and children's eventual income. The inclusion of GDP and $INEQ$ as regressors helps to partially correct this endogeneity problem. However, there are many other factors that may have changed within particular countries between the time the individual was a teenager and the time of the survey. The inclusion of a time trend can capture a common trend, but cannot capture differences across countries over time. To address this problem we include two additional regressors that help to control for country-specific trends. These are the *change* in per capita GDP and the *change* in our measure of inequality from the time the individual was 15-17 until the year of survey response, respectively. Since we have two cross sections, these two regressors take different values for each combination of year of birth, country, and cross section. They control for possible changes that are happening within countries between the moment when expenditure was made and the moment when poverty status is determined.¹⁹

Another concern is that the place in which people end up living may also play a role in determining poverty status (at least in the US there is wide variation in rates intergenerational mobility across regions within counties, see Chetty *et al.*, 2014) and therefore we include some region-cohort-specific controls. In particular we include as controls both the unemployment level in the region of residence when the individual was 15-17, together with the change in the unemployment level between that time and the year of survey response. We decided not to do so in our main specification because there are many missing data in the unemployment variable. In fact, sample size reduces by almost a half. In Section 4 we comment on this.

Finally, since we combine individual-level data with group-level data in our variable of interest (PE_{ct}), errors are clustered at the country and year of birth level. Since our dependent variable is a binary variable, we also estimate a Probit model and obtain similar results. Thus, for the sake of brevity, we only report results from the OLS specification in the main text.²⁰

Note that, according to the specification in Equation (1), if public expenditure when teenager reduces the probability of being poor when adult, the estimated coefficient of β_1 should be negative. Moreover, if that effect works mainly through those individuals who come from families with a low level of education, the estimated coefficient of β_3 should be positive.

¹⁹An additional way to account for unobserved factors consists of interacting the cohort trends with the initial GDP and Inequality to allow separate trends for countries that have initially low or high productivity and inequality. We considered this possibility and obtained very similar qualitative results. See online Appendix, Section C.

²⁰We show the results of estimating Equation (1) with a Probit specification (see online Appendix, Section D).

4 Results

We begin by estimating seven alternative models using the different measures of public expenditure per capita presented in Section 2. In Model 1 we use the sum of public expenditure at the three educational levels. In Model 2 we only add expenditure in primary and secondary education. Models 3 to 5 consider only expenditure in primary, secondary, and tertiary education, respectively. In Model 6 we include expenditure in primary and secondary education, but separately. Finally, in Model 7 we include expenditure at the three levels, again separately. In the seven models, each spending category is interacted with the dummy variable ED_FAM_i . Although the three spending categories are highly correlated with one another, our large sample size allows us to estimate their effects separately.²¹ All seven models include the full set of controls, with the exception of the rate of unemployment and its change. Later on we include these additional controls to see if they affect our results. Since we want to concentrate on the effects of our main variables of interest, we present in Tables 3 and 4 the marginal effects corresponding to the different measures of government spending and to the dummy variable that describes the level of education in the family (ED_FAM_i).²² Table 3 calculates the overall effects of these variables, while in Table 4 we compute marginal effects of government expenditure, for each one of the two family types.²³ Recall that the estimation we get for the parameter β_1 captures the effect of PE on those individuals from families with a low level of education, while the effect on those coming from families with a high education level is captured by the sum $\beta_1 + \beta_3$. The overall marginal effect is simply a weighted sum of these two effects, where the weights correspond to the fraction of individuals in each group.

Table 3

The upper part of Table 3 shows a pattern that is consistent with the idea that higher public expenditure in primary and in secondary education is associated with lower poverty rates in adulthood. This association vanishes when we consider expenditure in tertiary education. The estimated marginal effects of total expenditure (Model 1), expenditure in compulsory education (Model 2), in primary education (Model 3), and in secondary education (Model 4) are all negative and significant at the 1% level except for total expenditure, which is signifi-

²¹The correlation between our measures of spending in primary and secondary education is .5392, between secondary and tertiary is .5872, and between primary and tertiary is .3857.

²²Results remain unchanged after excluding observations with number of siblings above 19 and observations with youth unemployment rate above 75 (see Table 1). Results available upon request.

²³In Section E of the online Appendix we present a table with the estimated coefficients corresponding to Models 1 to 7.

cant only at the 5% level. The marginal effect of expenditure in tertiary education (Model 5) is not statistically different from zero. When we include separately expenditure at different levels (Models 6 and 7), we find that higher expenditure in primary and secondary education is again associated with lower adult poverty rates. Interestingly, in Model 7 we find that more expenditure in tertiary education is associated with a higher incidence of adult poverty. A possible explanation could be that expenditure in primary and, in particular, secondary education helps to redistribute income. Notice that this is a type of expenditure that benefits most individuals, since attendance at these levels is compulsory in most countries. On the contrary, since attendance to tertiary education is not compulsory, expenditure at this level concentrates on the richest segment of the society. Another explanation could be that, since public expenditure is computed when individuals are in their teens, they are most likely to be affected by expenditure in secondary education since this is the level of education they are currently attending.

To illustrate the size of the effects we obtain, we focus on Model 4 in which we only consider expenditure in secondary education. The estimated marginal effect is $-.0158$. This means that an increase of one standard deviation (\$1,556) in expenditure is associated with a reduction of 0.61 percentage points in adult poverty. This is a sizable effect, since it represents a 5% of the mean value of the variable *poor* (the mean of *poor* is 0.1211). Nevertheless, this effect is dwarfed by the effect of having educated parents. In Model 4 we find that having educated parents is associated with a reduction of 6.75 percentage points in the probability of being poor, in line with what we saw in Table 2.²⁴

In the bottom part of Table 3 we add two additional regressors. These are the level of unemployment in the region of residence when the individual was 16, together with the change in the unemployment rate since that moment till of survey response. These unemployment rates are computed from the European Labor Force Survey.²⁵ Data on unemployment rates are not available for all the country-cohorts we have in our sample. Because of this, using unemployment rates reduces our sample size from 140,053 to 84,121 observations in the case of Model 4. This means that the results are not directly comparable to those on the upper part of the table. In particular, we lose more than 50% of the observations from Austria, Finland, Hungary, Ireland, Norway, and Sweden. In terms of cohorts, we lose all observations from 1954 to 1957. In general, the inclusion of the unemployment rate means that we give

²⁴Results are also similar if we use alternative definitions of parental education. In Section A of the online Appendix we examine results by including instead separately two variables capturing both father and mother educational levels and also by defining three category dummies to capture three levels of educated parents instead of just two. We find very similar results.

²⁵See the Eurostat website for an overview of the LFS:

<http://ec.europa.eu/eurostat/web/microdata/european-union-labour-force-survey>

more weight to younger cohorts. In any case, we find that the results are very much in line with those in the upper part of the table. In particular, the effect of expenditure in secondary education is even stronger than what we obtained in the upper part of the table. We also find that now expenditure in primary education does not seem to be associated with a reduction in poverty rates.

Table 4

Since the models we estimate contain an interaction term between expenditure and family type, this allows us to compute marginal effects separately according to family type. This is what Table 4 shows, for the baseline model that does not include unemployment rates. In the upper part of the table we present the results corresponding to Models 1-5. Below we present the results corresponding to models 6 and 7. The general pattern is that the effect that has public expenditure on reducing adult poverty concentrates mostly on those individuals from families with low education. In models 1-6 we find that the effect of expenditure is associated with a reduction in poverty rates only for individuals with parents with low education. For instance, an increase in expenditure in secondary education of the size of one standard deviation is associated with a reduction of between 1.18 and 1.25 percentage points in the incidence of poverty in adulthood for children from low-educated families depending on the particular model considered. It is very interesting what happens in Model 5. The marginal effect for individuals from non-educated families is negative and highly significant (-0.0142), while the one corresponding to individuals from educated families is positive and also highly significant (+0.0344). These two effects do not have similar sizes but do have opposite signs. This is the reason why in Table 3 we found no effect of public expenditure on poverty reduction, since the overall marginal effect we obtained (+0.0034) is just the weighted average of the two marginal effects in Table 4.²⁶ In Model 7 we get mixed results. Similar to Models 4 and 6, expenditure in secondary education has a stronger association with poverty reduction for individuals from low educated families than for individuals from educated families. Expenditure in primary education seems to have a stronger effect on individuals from educated families, in opposition to results in Models 3 and 6. Finally, expenditure in tertiary education in Model 7 follows a similar pattern to what happens in Model 5. Once we disaggregate by family type, its correlation with poverty status is negative for individuals from non-educated families and positive for the other group. Focusing again on Model 4, an increase of one standard deviation in expenditure in secondary education is

²⁶The weights are the proportion of individuals from educated and non-educated families, in particular 0.3636 and 0.6364, for the observations used in the estimation of Model 5.

associated with a reduction of 1.24 percentage points in adult poverty for individuals from families with low education.

The general conclusion from Tables 3 and 4 is that higher public expenditure seems to be associated with lower adult poverty rates, although the effect seems to work through expenditure in primary and, in particular, secondary education. This finding is in line with previous results in the literature (see Mayer, 2002 or Mayer and Lopoo, 2008).²⁷

Next we estimate again all Models 1-7, but using expenditure when individuals were of age 10-12. We do this to study whether the strong effect of expenditure in secondary education found in Tables 3 and 4 is due to the fact that most individuals aged 15-17 must be enrolled in secondary education. If that is the main reason, when using expenditure at ages 10-12 we should find a stronger effect of expenditure in primary education, since that is the level in which most individuals should be enrolled at that age. As we said above, results are not exactly comparable for two reasons. First, with this new measure of expenditure we have fewer observations since now we lose all individuals born before 1959, while with our previous measures we had cohorts going back to 1954. In the case of Model 4 sample size drops from 140,053 to 110,152. Second, the sample we use with this new measure is much younger since we are excluding the five older cohorts. As Table 5 shows, expenditure in secondary education is still the one that has the strongest association with poverty reduction. Expenditure at the other levels does not display any correlation with poverty reduction.²⁸

Table 5

As a further illustration, we have used our results from Model 1 to compute predicted probabilities of being below the poverty line, as a function of public expenditure, for the two types of families. In particular here we use our first measure of public expenditure, the one that combines expenditure at the three educational levels when individuals were of age 15-17 (Model 1). Figure 3 contains a plot of these probabilities. As can be seen in the figure, public expenditure seems to reduce the gap between the two types of families. However, even at the 99 percentile of total expenditure, there is still a gap between the probabilities for the

²⁷As a robustness check, we regress poverty rates in adulthood on public expenditure from a different period than the one we are considering in our main specification. In particular, to each cohort from a given country, we randomly assign public expenditure corresponding to a different cohort from the same country. We find that the effect of public expenditure is not significant in most cases. Therefore, the actual measures of public expenditure are meaningful determinants of the variation of current poverty rates among individuals. See online Appendix, Section F.

²⁸Similar results are obtained while estimating Models 1-7 using expenditure at age 10-12 and age 15-17 on the same smaller set of observations. These results are not shown for conciseness but available from the authors upon request.

two groups.²⁹

Figure 3

We see that the effect of public expenditure on poverty is negative among individuals from low educated families and positive among individuals with high educated parents. Therefore we can conclude that the negative relationship between public expenditure and poverty observed at the country level for individuals with parents with low education (see Figure 2 above) still holds at the individual level.

Before closing this section we want to comment briefly on the possible mechanisms behind the effect of public expenditure in adult poverty. There is a recent literature that points out to the existence of a positive link between public expenditure in education and academic achievements. One possibility is that when we invest more resources in education, some individuals benefit because they acquire more education. In particular, they may decide not to drop out from school after finishing compulsory education. This, in turn, may reduce the probability of being below the poverty line when adults. Some recent studies provide evidence on the potential mechanisms from which these spending effects arise. For instance, Bhalotra *et al.* (2015) find that the removal of fees on primary schools in developing countries is associated with roughly 0.2 more years of schooling. They also find that this effect is stronger for children of women with less schooling. Bellani and Bia (2016) use data from the 2005 and 2011 EU-SILC and find that exposure to poverty in childhood reduces the probability of completing at least secondary education by 12 percentage points. Finally, Jackson *et al.* (2016) find that spending increases are associated with sizable improvements in measured school inputs, including reductions in student teacher ratios, increases in teacher salaries, and longer school years which in turn improve individuals' adult outcomes.

5 Concluding remarks

Being raised in a poor household may have negative long-run effects on individual welfare. Here we study whether these long-run effects of poverty are mitigated by public expenditure, and to what extent.

Our main finding is that public expenditure has a strong long-run effect on reducing the incidence of poverty in adulthood. In addition, we find that this effect concentrates mostly on individuals who were raised in families with a low level of education. This result suggests

²⁹Predicted probabilities of poor at the 99 percentile of public expenditure are .085 for individuals from educated families and .113 for the other group. We reject the hypothesis that these two probabilities are equal (p -value is 0.0001).

that public expenditure increases intergenerational income mobility.

We believe that our results could be relevant for several recent debates in the literature on the economics of education. In particular, they give support to policies that promote increasing expenditure in basic education, for example, by reducing the compulsory school entry age, or by improving the quality of the education provided at early stages.

This study has several limitations. The most important one is the lack of a source of plausibly exogenous variation in public expenditure, implying that the estimated coefficients may reflect the effects of other unobserved factors correlated both with expenditure and with adult poverty status. The inclusion of several controls that capture country-specific time trends may help to mitigate this concern. Another relatively minor concern is that we do not have a direct measure of government investment in education and thus we follow previous research in using government spending as a proxy for government investment (see Mayer and Lopoo, 2008). However, public expenditure could be an imperfect measure of actual investment. For example, countries that spend similar amounts might be spending it differently and having different results with the same level of expenditure depending on several other circumstances. Besides, we lack data on private expenditure in education, although some of the variables describing household characteristics can be seen as proxies of this expenditure.

References

- [1] Akin, J.S., Garfinkel, I.: The Quality of Education and Cohort Variation in Black-White Earnings Differentials: Comment. *American Economic Review* 70, 1, 186-191 (1980).
- [2] Atkinson A.: Macerata Lectures on European Economic Policy. Poverty and the EU: the New Decade. Working Paper 24-2010, Macerata University, Department of Studies on Economic Development (DiSSE) (2010).
- [3] Atkinson A., Piketty T., Saez, E.: Top Incomes in the Long Run of History. *Journal of Economic Literature* 49, 1, 3-71 (2011).
- [4] Bellani, L., Bia, M. : Intergenerational poverty transmission in Europe: The role of education. Working Paper Series 2016-02, University of Konstanz (2016).
- [5] Bhalotra, S., Harttgen, K., Klasen, S.: The impact of school fees on schooling outcomes and the intergenerational transmission of education, University of Bristol (2015).
- [6] Blanden, J., Gregg, P.: Family income and educational attainment: a review of approaches and evidence for Britain. *Oxford Review of Economic Policy* 20 (2), 245-263 (2004).
- [7] Chetty, R., Hendren, N., Kline P., Saez, E.: Where is the Land of Opportunity? The Geography of Intergenerational Mobility in the United States. *Quarterly Journal of Economics* 129 (4), 1553-1623 (2014).
- [8] Corak, M.: Do poor children become poor adults? Lessons for public policy from a cross country comparison of generational earnings mobility. *Research on Economic Inequality* 13, 143-188 (2006).
- [9] Corcoran, M., Adams, T.: Race, sex and the intergenerational transmission of poverty. In: Duncan, G. J. and Brooks-Gunn, J. (eds.) *Consequences of growing up poor*, pp. 461-517. Russell Sage Foundation, New York (1997).
- [10] Figari, F.: Cross-national differences in determinants of multiple deprivation in Europe. *Journal of Economic Inequality* 10, 397-418 (2012).
- [11] Grogger, J.: School expenditures and post-schooling earnings: evidence from the high school and beyond. *Review of Economics and Statistics* 78, 4, 628-637 (1996).

- [12] Hanushek, E.: School resources and student performance. In: Burtless, G. (ed.), *Does Money Matter? The Effect of School Resources on Student Achievement and Adult Success*. Brookings Institution Press, Washington, D.C. (1996).
- [13] Hanushek, E.: Spending on schools. In: Moe, T. (ed.), *A Primer on American Education*, pp. 69–88. Hoover Institution Press, Palo Alto, CA (2001).
- [14] Hedges, L.V., Laine, R., Greenwald, R.: Does money matter? Meta-analysis of studies of the effects of differential school inputs on student outcomes. *Educational Researcher* 23, 3, 5–14 (1992).
- [15] Hertz, T., Jayasunderay, T., Piraino, P., Selcuk, S., Smithy, N., Verashchagina, A.: The Inheritance of Educational Inequality: International Comparisons and Fifty-Year Trends. *The B.E. Journal of Economic Analysis and Policy* 7, Article 10 (2007).
- [16] Hidalgo-Hidalgo, M, Iturbe-Ormaetxe, I.: Long-run effects on poverty of public expenditure in education. *IVIE-Working Papers AD 2014-06* (2014).
- [17] Holmlund, H., Lindahl, M., Plug, E.: The causal effect of parents' schooling on children's schooling: A comparison of estimation methods. *Journal of Economic Literature* 49 (3), 615-651 (2011).
- [18] Jackson, C.K., Johnson, R., Persico, C.: The Effects of School Spending on Educational and Economic Outcomes: Evidence from School Finance Reforms. *The Quarterly Journal of Economics*, 131 (1), 157–218 (2016).
- [19] Jäntti, M., Jenkins, S.: Income mobility. In Atkinson, A., Bourguignon, F. (eds.) *Handbook of Income Distribution*, Volume 2B, pp. 807-936, Elsevier (2014).
- [20] Jenkins, S., Siedler, T.: The intergenerational transmission of poverty in industrialized countries. *Chronic Poverty Research Centre Working Paper 75*, Institute for Social and Economic Research, University of Essex (2007).
- [21] Jenkins, S., Brandolini, A., Micklewright, J., Nolan, B. (eds): *The Great Recession and the Distribution of Household Income*. Oxford University Press (2013).
- [22] Marx, I., Nolan, B., Olivera, J.: The welfare state and anti-poverty policy in rich countries. In Atkinson, A., Bourguignon, F. (eds.) *Handbook of Income Distribution*, Volume 2B, pp. 2063-2140, Elsevier (2014).

- [23] Mayer, S. E.: The Influence of Parental Income on Children's Outcomes: A Review. Report to the New Zealand Ministry of Social Development (2002).
- [24] Mayer, S. E., Lopoo, L. M.: Government spending and intergenerational mobility. *Journal of Public Economics* 92, 139–158 (2008).
- [25] Meghir, C., Palme, M.: Educational Reform, Ability, and Family Background. *American Economic Review* 95, 1, 414-424 (2005).
- [26] Morelli, S., Smeeding, T., Thompson, J.: Post-1970 trends in within-country inequality and poverty: Rich and middle income countries. In Atkinson, A., Bourguignon, F. (eds.) *Handbook of Income Distribution, Volume 2A*, pp. 596-693, Elsevier, (2015).
- [27] Nolan, B. and Marx, I.: Inequality, poverty and social exclusion. In Salverda, W., Nolan, B., Smeeding, T. (eds) *Oxford Handbook of Economic Inequality*, Oxford: Oxford University Press (2009).
- [28] OECD: *An Overview of Growing Income Inequalities in OECD Countries: Main Findings*. OECD Publishing, Paris (2011).
- [29] OECD: *Crisis squeezes income and puts pressure on inequality and poverty*. OECD Publishing, Paris (2013).
- [30] Piketty, T.: *Capital in the Twenty-First Century*, Harvard University Press (2014).
- [31] Piopiunik, M.: Intergenerational transmission of education and mediating channels: Evidence from a compulsory schooling reform in Germany. *The Scandinavian Journal of Economics* 116 (3), 878-907 (2014).
- [32] Sylwester, K.: Income inequality, education expenditures and growth. *Journal of Development Economics* 63, 379-398 (2000).
- [33] Wolff, P., Montaigne, F., Rojas González, G.: Investing in statistics: EU-SILC. In Atkinson, A., Marlier, E. (eds) *Income and Living Conditions in Europe*, Chapter 2, pp. 38-55. Luxembourg: Eurostat (2010).

Appendix: Variable Description

- *Expenditure per student, primary, secondary and tertiary*: Public expenditure per student is the public current spending on education divided by the total number of students at that level. Public expenditure (current and capital) includes government spending on educational institutions (both public and private), education administration as well as subsidies for private entities (students/households and other private entities). Data are in constant 2000 U.S. dollars, and are corrected by PPP. Sources: United Nations Educational, Scientific, and Cultural Organization (UNESCO) Institute for Statistics and PPP data are from the World Bank.
- *GDP per capita*: It is gross domestic product divided by midyear population. GDP is the sum of gross value added by all resident producers in the economy plus any product taxes and minus any subsidies not included in the value of the products. It is calculated without making deductions for depreciation of fabricated assets or for depletion and degradation of natural resources. Data are in constant 2000 U.S. dollars and are corrected by PPP. Source: World Bank national accounts data, and OECD National Accounts data files.
- *Educated family*: A dummy variable that takes value 1 if either the education the father or mother had attained when the individual was around 14 years old is at least upper secondary education. Source: EU-SILC
- *Father unemployed*: A dummy variable that takes value 1 if the father was unemployed when the individual was 14 years old. Source: EU-SILC.
- *Siblings*: It is the number of siblings the individual's had when he/she was around 14 years old. Source: EU-SILC.
- *Citizenship*: It generally corresponds to the country issuing the passport. It refers to current (at the time of survey) national boundaries. It is a dummy variable that takes value 1 if citizenship corresponds to the country of residence. Source: EU-SILC
- *Inequality*: It is the country average inequality during the previous years (3-5) to the period of individual's primary school attendance. Source: Estimated Household Income Inequality Data Set (EHII), which is a panel of estimated Gini coefficients. The EHII is a global dataset on inequality derived by the University of Texas Inequality Project (UTIP)

- *Unemployment rate*: It is the regional (at the level of NUTS-2) youth unemployment rate in the region of residence when the individual was 15-17. Source: EU Labor Force Survey, Eurostat and US Bureau of Labor Statistics, International Comparisons.
- *Single mother*: It is a dummy variable that takes value 1 if the individual lived with only his mother when he/she was around 14 years old. Source: EU-SILC.
- *CS2011*: It is a dummy variable that takes value 1 if the observation belongs to the 2011 cross section. Source: EU-SILC.

Table 1: Summary Statistics



Variable	Mean	Std.Dev.	Min	Max	Obs
Poor	0.121	0.326	0	1	163,133
Female	0.508	0.500	0	1	163,159
Non citizen	0.00349	0.0590	0	1	162,915
Year 2011	0.521	0.500	0	1	163,159
Educated family	0.355	0.478	0	1	153,517
Single mother family	0.0765	0.266	0	1	157,600
Number of siblings	1.791	1.687	0	40	155,908
Father unemployed	0.00918	0.0954	0	1	147,536
Per pupil exp. education (age 15-17), year 2000 US dollars (PPP)	13,034.6	6,336.4	3,905.5	39,648.3	163,159
Per pupil exp. compulsory education (age 15-17), year 2000 US dollars (PPP)	6,039.3	2,613.2	1,246.6	17,710.6	163,159
Per pupil exp. primary education (age 15-17), year 2000 US dollars (PPP)	2,742.0	1,422.1	441.5	9,034.6	163,159
Per pupil exp. secondary education (age 15-17), year 2000 US dollars (PPP)	3,297.3	1,555.8	604.9	10,517.8	163,159
Per pupil exp. tertiary education (age 15-17), year 2000 US dollars (PPP)	6,995.3	4,492.6	1,857.4	31,475.1	163,159
Per capita GDP (age 15-17), year 2000 US dollars (PPP)	16,324.5	3,971.4	5,742.1	35,686.7	163,159
Income Inequality (age 15-17)	35.94	3.428	27.59	43.49	158,489
Youth unemployment rate (age 16-21)	32.82	19.27	0	92.03	102,476
Country dummies					
AT					8,828
BE					7,051
DK					3,387
ES					23,637
FI					8,106
FR					15,862
GR					9,581
HU					4,781
IE					7,008
IT					32,769
LU					3,265
NL					9,083
NO					4,363
PT					7,820
SE					4,660
UK					12,958
					163,159

Note: Sample: Individuals for which the variable Per pupil expenditure in education is not missing. Source: EU-SILC 2005 and 2011 and UNESCO Database.

Table 3: Overall marginal effects of public expenditure (15-17 years old)

I. Baseline	Model 1	Model 2	Model 3	Model 4	Model 5	Model 6	Model 7
Total exp.	-0.0128** (0.0065)						
Exp. in compulsory educ		-0.0322*** (0.0073)					
Exp. in primary educ			-0.0139*** (0.0053)			-0.0126** (0.0054)	-0.0157*** (0.0057)
Exp. in secondary educ				-0.0158*** (0.0041)		-0.0159*** (0.0040)	-0.0204*** (0.0042)
Exp. in tertiary educ					0.0034 (0.0046)		0.0096** (0.0048)
Family educated	-0.0688*** (0.0028)	-0.0684*** (0.0028)	-0.0657*** (0.0029)	-0.0688*** (0.0028)	-0.0675*** (0.0027)	-0.0687*** (0.0028)	-0.0694*** (0.0027)
Observations	138,512	139,807	141,701	140,053	144,349	139,807	138,512
II. Adding unemployment and its change							
Total exp.	-0.0185 (0.0114)						
Exp. in compulsory educ		-0.0399*** (0.0091)					
Exp. in primary educ			-0.0126 (0.0102)			-0.0062 (0.0083)	-0.0156 (0.0094)
Exp. in secondary				-0.0250*** (0.0049)		-0.0238*** (0.0047)	-0.0288*** (0.0050)
Exp. in tertiary educ					0.0039 (0.0103)		0.0197** (0.0090)
Family educated	-0.0732*** (0.0032)	-0.0729*** (0.0031)	-0.0711*** (0.0033)	-0.0739*** (0.0031)	-0.0724*** (0.0032)	-0.0740*** (0.0031)	-0.0745*** (0.0031)
Observations	82,580	83,875	83,875	84,121	82,826	83,875	82,580

Notes: *** p<0.01, ** p<0.05, * p<0.1. Standard errors are clustered at the country-year of birth level. Source: EU-SILC 2005 and 201, UNESCO Database and EU Labor Force Survey, Eurostat (see the Appendix for the variables definition).

Table 4: Decomposition of the marginal effect of public expenditure (15-17 years old)

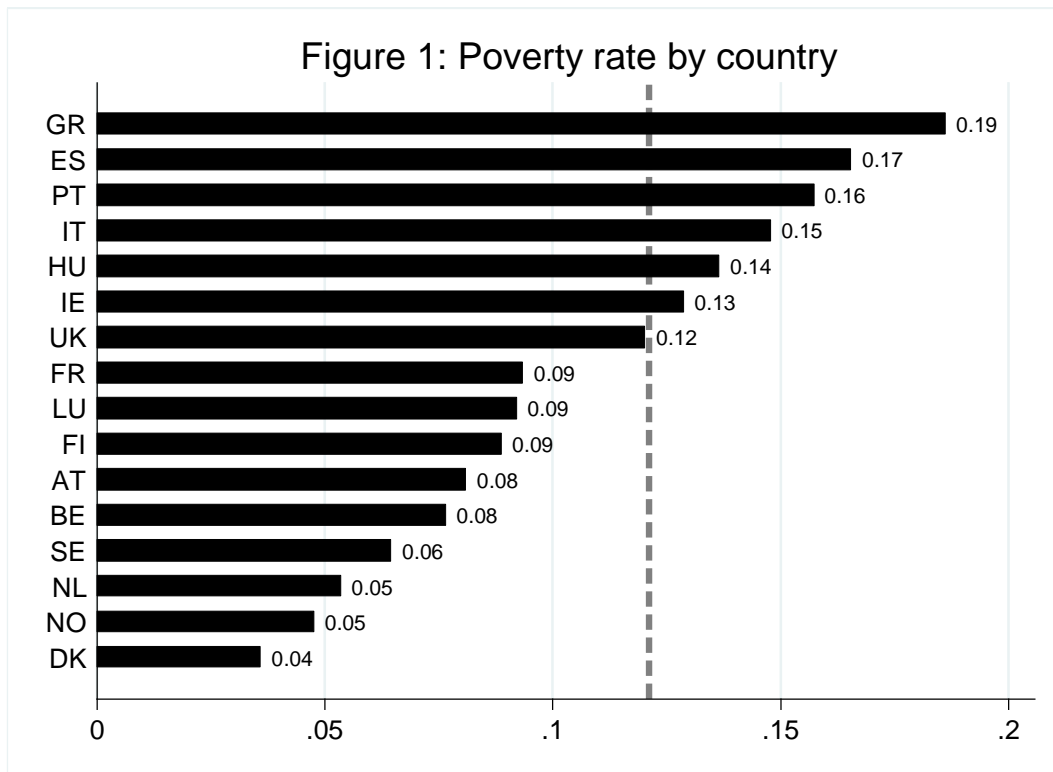
I. Baseline Models 1-5	Total	Compulsory	Primary	Secondary	Tertiary
Educated family = 0	-0.0347*** (0.0066)	-0.0510*** (0.0076)	-0.0281*** (0.0059)	-0.0322*** (0.0041)	-0.0142*** (0.0048)
Educated family = 1	0.0255*** (0.0073)	0.0002 (0.0081)	0.0103* (0.0059)	0.0126** (0.0055)	0.0344*** (0.0053)
Observations	138,512	139,807	141,701	140,053	144,349
II. Baseline Model 6					
Educated family = 0			-0.0135** (0.0066)	-0.0316*** (0.0045)	
Educated family = 1			-0.0111* (0.0065)	0.0114* (0.0061)	
Observations			139,807	139,807	
III. Baseline Model 7					
Educated family = 0			-0.0144** (0.0069)	-0.0303*** (0.0047)	-0.0021 (0.0050)
Educated family = 1			-0.0181*** (0.0069)	-0.0031 (0.0077)	0.0300*** (0.0065)
Observations			138,512	138,512	138,512

Note: Sample: Individuals for which the variable Per pupil expenditure in education is not missing.
Source: EU-SILC 2005 and 2011 and UNESCO Database.

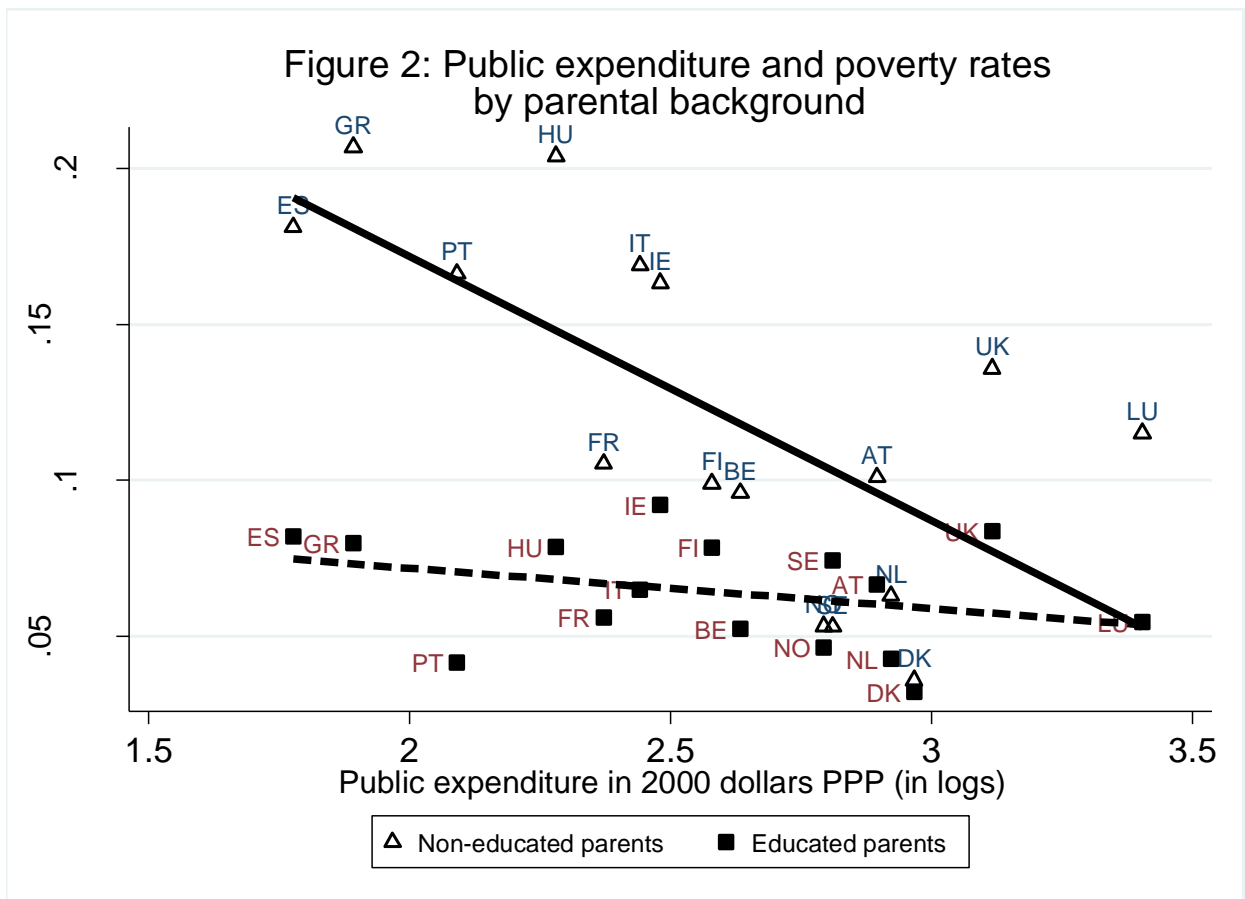
Table 5: Overall marginal effects of public expenditure (10-12 years old)

I. Baseline	Model 1	Model 2	Model 3	Model 4	Model 5	Model 6	Model 7
Total exp.	0.0050 (0.0074)						
Exp. in compulsory educ		-0.0085 (0.0101)					
Exp. in primary educ			0.0103 (0.0072)			0.0146** (0.0073)	0.0115 (0.0079)
Exp. in secondary educ				-0.0232*** (0.0057)		-0.0232*** (0.0055)	-0.0266*** (0.0058)
Exp. in tertiary educ					0.0061 (0.0048)		0.0086 (0.0057)
Family educated	-0.0710*** (0.0028)	-0.0711*** (0.0029)	-0.0679*** (0.0030)	-0.0717*** (0.0029)	-0.0694*** (0.0027)	-0.0717*** (0.0030)	-0.0720*** (0.0029)
Observations	109,560	110,152	111,901	110,152	115,218	110,152	109,560

Notes: *** p<0.01, ** p<0.05, * p<0.1. Standard errors are clustered at the country-year of birth level. Source: EU-SILC 2005 and 2011 and UNESCO Database (see the Appendix for the variables definition).

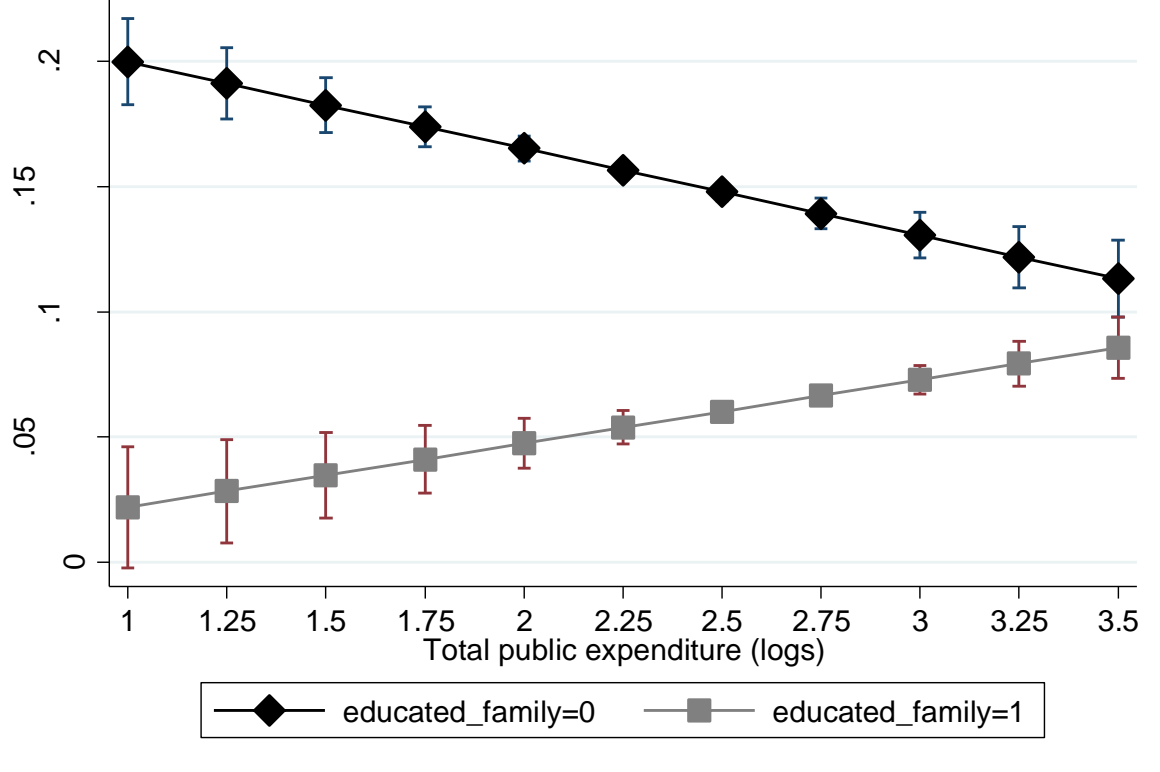


Notes: Only individuals between ages 25 and 57. We exclude individuals not born in the corresponding country. Source: EU-SILC, waves 2005 and 2011.



11/1/04

Figure 3: Predicted effect of PE on poverty by family background



Online appendix to

Long-run Effects of Public Expenditure on Poverty

Marisa Hidalgo-Hidalgo and Iñigo Iturbe-Ormaetxe

A. Parental education

In this section we explore whether our results are sensitive to the definition of parental education. First we present the results of estimating the model in Equation (1) introducing separately the educational levels of both parents.

Table 1A: Overall marginal effects of public expenditure: father and mother education

Variables	Model 1	Model 2	Model 3	Model 4	Model 5	Model 6	Model 7
Total exp.	-0.0154** (0.0066)						
Exp. in compulsory education		-0.0332*** (0.0075)					
Exp. in primary education			-0.0136** (0.0055)			-0.0118** (0.0056)	-0.0143** (0.0059)
Exp. in secondary education				-0.0170*** (0.0042)		-0.0170*** (0.0041)	-0.0209*** (0.0044)
Exp. in tertiary education					0.0016 (0.0047)		0.0076 (0.0051)
Father educated	-0.0501*** (0.0025)	-0.0496*** (0.0025)	-0.0484*** (0.0026)	-0.0490*** (0.0025)	-0.0497*** (0.0024)	-0.0495*** (0.0025)	-0.0504*** (0.0024)
Mother educated	-0.0380*** (0.0027)	-0.0378*** (0.0028)	-0.0351*** (0.0027)	-0.0384*** (0.0026)	-0.0361*** (0.0026)	-0.0379*** (0.0027)	-0.0384*** (0.0027)
Observations	131,167	132,423	134,083	132,654	136,717	132,423	131,167

Notes: *** p<0.01, ** p<0.05, * p<0.1. Standard errors are clustered at the country-year of birth level.

As can be observed, the effect of father's education on poverty reduction is somewhat larger than that of mother's education. The results regarding the impact of public expenditure are very similar to the ones shown in Table 3, although the sample size gets lower because of the large increase in missing values. Observe that our dummy variable "educated_family" categorizes as non-educated family those with 1 "non-missing" parent without secondary education and 1 "missing" parent with secondary education. Note that this definition might increase measurement error. However, it does not threaten the main findings. Observe that this measurement error would likely introduce a positive bias on the negative impact of public expenditure on poverty: some individuals with educated family, for which public expenditure

has no effect, are pooled with individuals from non-educated families. Thus, if we could separate them the effect of public expenditure would be larger.

Next we define parental education through three dummies that will be equal to 1 if either the mother or the father has primary, secondary or tertiary education, respectively. We estimated Equation (1) using this alternative definition. Table 2D shows the results for this definition of parental education (Models 1-7):

Table 2A: Overall marginal effects of public expenditure: educated family (three categories)

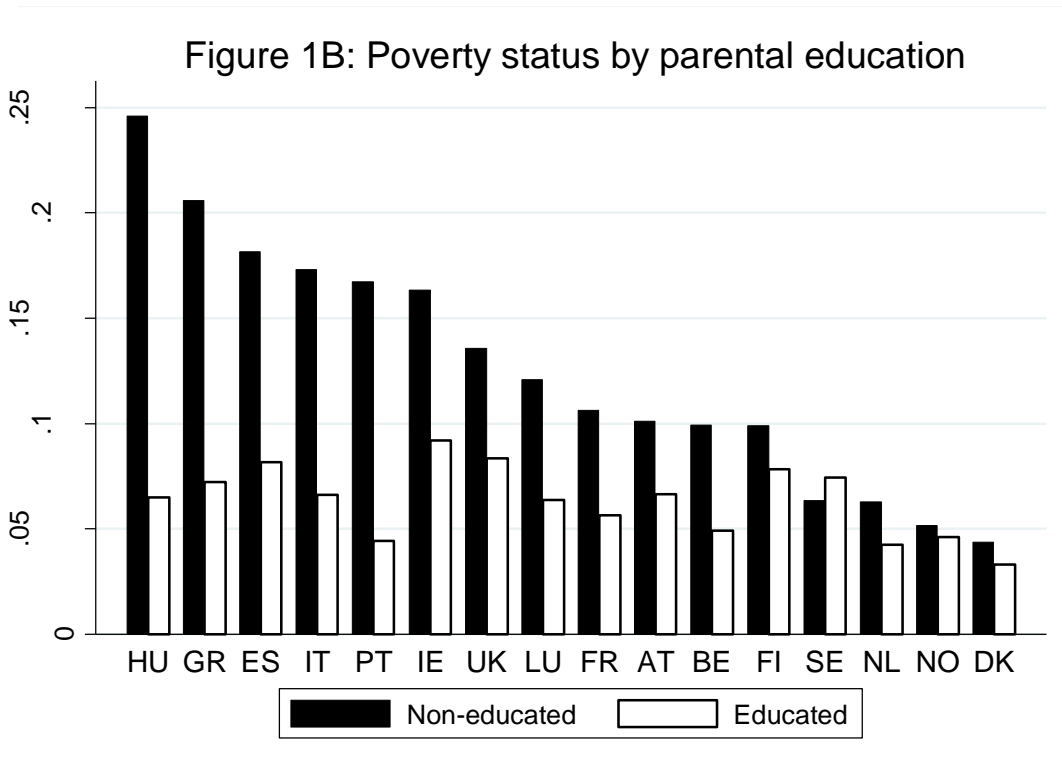
Variables	Model 1	Model 2	Model 3	Model 4	Model 5	Model 6	Model 7
Total exp.	-0.0132** (0.0065)						
Exp. in compulsory education		-0.0329*** (0.0073)					
Exp. in primary education			-0.0140*** (0.0053)			-0.0131** (0.0054)	-0.0161*** (0.0058)
Exp. in secondary education				-0.0159*** (0.0041)		-0.0161*** (0.0040)	-0.0207*** (0.0043)
Exp. in tertiary education					0.0033 (0.0046)		0.0097** (0.0048)
Family educated (Sec Educ)	-0.0557*** (0.0029)	-0.0545*** (0.0029)	-0.0519*** (0.0029)	-0.0550*** (0.0029)	-0.0545*** (0.0028)	-0.0547*** (0.0029)	-0.0558*** (0.0029)
Family educated (Ter Educ)	-0.0549*** (0.0025)	-0.0555*** (0.0026)	-0.0542*** (0.0027)	-0.0542*** (0.0025)	-0.0537*** (0.0025)	-0.0554*** (0.0025)	-0.0558*** (0.0025)
Observations	138,512	139,807	141,701	140,053	144,349	139,807	138,512

Notes: *** p<0.01, ** p<0.05, * p<0.1. Standard errors are clustered at the country-year of birth level.

Again, results are very similar to the ones in Table (3) in the paper. Thus, the impact of public expenditure on current poverty status does not depend on how parental education is defined.

B. Poverty and parental education

In this Section we provide a brief description of the correlation between current poverty status and family background, as measured by parental education. We illustrate these correlations in Figure 1A below, where we represent poverty rates by country for individuals with educated and non-educated parents, respectively.



Notes: Educated parents means that at least one of them has secondary or tertiary education. Source: EU-SILC, 2005 and 2011.

We find striking differences across countries. While the general pattern is that poverty rates are higher among those who have non-educated parents, the Scandinavian countries follow a different pattern. In both Denmark and Norway we cannot reject the null hypothesis that the difference in poverty rates between individuals with educated and non-educated parents is zero. Moreover, in Sweden poverty rates are higher for individuals from educated families than for those from non-educated families, and this difference is significantly different from zero. In all remaining countries poverty rates are significantly higher among those who have non-educated parents. Another clear pattern is that differences in poverty rates according to parental education are much higher in those countries where the poverty rate is high.

C. Separate trends for countries

In Section 4 we present estimation results of Equation (1) where we include initial GDP and Inequality for each country-cohort and the changes in both the per capita GDP and Inequality between the time the individual was 15-17 until the year of the survey response. They control for possible changes that are happening within countries between the moment when the expenditure was made and the moment when the poverty status is determined. An additional way to account for unobserved factors consists of interacting the cohort trends with the initial GDP and the initial Inequality to allow separate trends for countries that have initially low or high productivity and inequality. We considered this possibility and obtained very similar qualitative results:

**Table 1C: Overall marginal effects of public expenditure:
GDP and Ineq interacted with time trends**

Variables	Model 1	Model 2	Model 3	Model 4	Model 5	Model 6	Model 7
Total exp.	-0.0070 (0.0059)						
Exp. in compulsory education		-0.0321*** (0.0071)					
Exp. in primary education			-0.0113** (0.0047)			-0.0117** (0.0049)	-0.0131** (0.0056)
Exp. in secondary education				-0.0163*** (0.0045)		-0.0161*** (0.0044)	-0.0147*** (0.0046)
Exp. in tertiary education					0.0043 (0.0041)		0.0089* (0.0051)
Family educated	-0.0686*** (0.0028)	-0.0682*** (0.0028)	-0.0656*** (0.0029)	-0.0685*** (0.0028)	-0.0674*** (0.0027)	-0.0685*** (0.0028)	-0.0690*** (0.0028)
Observations	138,512	139,807	141,701	140,053	144,349	139,807	138,512

Notes: *** p<0.01, ** p<0.05, * p<0.1. Standard errors are clustered at the country-year of birth level.

D. Probit estimation results

Table 1D: Overall marginal effects of public expenditure. Probit (age 15-17)

I. Baseline	Model 1	Model 2	Model 3	Model 4	Model 5	Model 6	Model 7
Total exp.	-0.0108* (0.0061)						
Exp. in compulsory education		-0.0312*** (0.0071)					
Exp. in primary education			-0.0154*** (0.0054)			-0.0131** (0.0053)	-0.0187*** (0.0061)
Exp. in secondary education				-0.0146*** (0.0042)		-0.0146*** (0.0041)	-0.0198*** (0.0043)
Exp. in tertiary education					0.0041 (0.0043)		0.0127*** (0.0049)
Family educated	-0.0700*** (0.0024)	-0.0694*** (0.0024)	-0.0674*** (0.0025)	-0.0696*** (0.0024)	-0.0691*** (0.0024)	-0.0696*** (0.0024)	-0.0703*** (0.0024)
Observations	138,512	139,807	141,701	140,053	144,349	139,807	138,512
II. Adding unemployment and its change							
Total exp.	-0.0177 (0.0110)						
Exp. in compulsory education		-0.0422*** (0.0094)					
Exp. in primary education			-0.0164 (0.0105)			-0.0112 (0.0089)	-0.0275** (0.0107)
Exp. in secondary education				-0.0248*** (0.0051)		-0.0233*** (0.0049)	-0.0299*** (0.0052)
Exp. in tertiary education					0.0052 (0.0098)		0.0268*** (0.0092)
Family educated	-0.0738*** (0.0028)	-0.0736*** (0.0027)	-0.0723*** (0.0028)	-0.0742*** (0.0027)	-0.0732*** (0.0028)	-0.0743*** (0.0027)	-0.0746*** (0.0028)
Observations	82,580	83,875	83,875	84,121	82,826	83,875	82,580

Notes: *** p<0.01, ** p<0.05, * p<0.1. Standard errors are clustered at the country-year of birth level.

Table 2D: Decomposition of the marginal effect of public expenditure. Probit

I. Models 1-5	Total	Compulsory	Primary	Secondary	Tertiary
Educated family = 0	-0.0277*** (0.0072)	-0.0492*** (0.0086)	-0.0275*** (0.0068)	-0.0282*** (0.0048)	-0.0070 (0.0051)
Educated family = 1	0.0189*** (0.0050)	0.0001 (0.0056)	0.0053 (0.0043)	0.0088** (0.0042)	0.0239*** (0.0037)
Observations	138,512	139,807	141,701	140,053	144,349

II. Model 6					
Educated family = 0			-0.0152** (0.0071)	-0.0285*** (0.0050)	
Educated family = 1			-0.0096** (0.0048)	0.0093** (0.0047)	
Observations			139,807	139,807	

III. Model 7					
Educated family = 0			-0.0207** (0.0080)	-0.0302*** (0.0053)	0.0066 (0.0059)
Educated family = 1			-0.0151*** (0.0053)	-0.0018 (0.0058)	0.0233*** (0.0045)
Observations			138,512	138,512	138,512

Notes: *** p<0.01, ** p<0.05, * p<0.1. Standard errors are clustered at the country-year of birth level.

E. Baseline model. Coefficients OLS

Table 1E: Baseline models: coefficients OLS (age 15-17)

Variables	Model 1	Model 2	Model 3	Model 4	Model 5	Model 6	Model 7
Total exp.	-0.0347*** (0.0066)						
Family educated# Total exp.	0.0601*** (0.0048)						
Exp. in compulsory education		-0.0510*** (0.0076)					
Family educated# Exp. in compulsory education		0.0513*** (0.0056)					
Exp. in primary education			-0.0281*** (0.0059)			-0.0135** (0.0066)	-0.0144** (0.0069)
Family educated# Exp. in primary education			0.0384*** (0.0054)			0.0025 (0.0079)	-0.0037 (0.0082)
Exp. in secondary education				-0.0322*** (0.0041)		-0.0316*** (0.0045)	-0.0303*** (0.0047)
Family educated# Exp. in secondary education				0.0448*** (0.0047)		0.0431*** (0.0067)	0.0273*** (0.0087)
Exp. in tertiary education					-0.0142*** (0.0048)		-0.0021 (0.0050)
Family educated# Exp. in tertiary education					0.0485*** (0.0039)		0.0321*** (0.0058)
Family educated	-0.2157*** (0.0128)	-0.1552*** (0.0103)	-0.1005*** (0.0059)	-0.1158*** (0.0063)	-0.1535*** (0.0079)	-0.1161*** (0.0063)	-0.1514*** (0.0081)
Female	0.0124*** (0.0019)	0.0123*** (0.0019)	0.0122*** (0.0019)	0.0124*** (0.0019)	0.0123*** (0.0019)	0.0123*** (0.0019)	0.0124*** (0.0019)
Non citizen	0.0780*** (0.0204)	0.0617*** (0.0181)	0.0602*** (0.0181)	0.0598*** (0.0181)	0.0741*** (0.0202)	0.0612*** (0.0181)	0.0787*** (0.0204)
Single mother family	0.0306*** (0.0049)	0.0297*** (0.0048)	0.0304*** (0.0049)	0.0295*** (0.0048)	0.0313*** (0.0049)	0.0295*** (0.0048)	0.0306*** (0.0049)
Number of siblings	0.0174*** (0.0010)	0.0173*** (0.0010)	0.0172*** (0.0010)	0.0174*** (0.0010)	0.0175*** (0.0010)	0.0174*** (0.0010)	0.0175*** (0.0010)
Father unemployed	0.1502*** (0.0131)	0.1510*** (0.0131)	0.1506*** (0.0131)	0.1516*** (0.0131)	0.1470*** (0.0128)	0.1512*** (0.0131)	0.1500*** (0.0131)
(log)GDP	0.0338 (0.0744)	0.0309 (0.0736)	0.0336 (0.0732)	0.0211 (0.0734)	0.0271 (0.0738)	0.0274 (0.0734)	0.0442 (0.0740)
GDP growth	-0.0106 (0.0729)	-0.0022 (0.0727)	0.0103 (0.0723)	0.0006 (0.0726)	-0.0009 (0.0727)	-0.0028 (0.0726)	0.0013 (0.0729)
Income Inequality	-0.0062 (0.0047)	-0.0075* (0.0045)	-0.0086* (0.0045)	-0.0073 (0.0046)	-0.0093** (0.0045)	-0.0071 (0.0046)	-0.0090* (0.0048)
Change in Income Inequality	-0.1171 (0.1446)	-0.1113 (0.1365)	-0.1758 (0.1332)	-0.1122 (0.1362)	-0.2351* (0.1385)	-0.0964 (0.1373)	-0.1838 (0.1469)
cs2011	0.0109** (0.0048)	0.0119** (0.0048)	0.0130*** (0.0048)	0.0119** (0.0048)	0.0121** (0.0048)	0.0117** (0.0048)	0.0115** (0.0049)
Constant	0.3416	0.3419	0.2146	0.2848	0.3327	0.2994	0.2877

	(0.7002)	(0.6984)	(0.6943)	(0.6993)	(0.7002)	(0.6982)	(0.7024)
Observations	138,512	139,807	141,701	140,053	144,349	139,807	138,512
R-squared	0.0380	0.0378	0.0378	0.0379	0.0379	0.0379	0.0382
Robust standard errors in parentheses	*** p<0.01, ** p<0.05, * p<0.1						

F. Robustness analysis

In this section we study the robustness of our analysis incorporating additional regressors and using alternative definitions of parental background and current poverty status.

Country income and initial inequality

We check whether public expenditure has a similar impact on poverty reduction regardless of some contextual variables as country GDP or inequality. The idea is that, in the same way as the effect of public expenditure depends on family type, the effect of GDP and inequality on adult poverty may also depend on the level of education in the family. In order to do so, we modify Equation (1) including two additional interaction terms of expenditure: one with the variable GDP_{ct} and another one with the variable $INEQ_{ct}$. Table 1G below shows the average marginal effects corresponding to the variables of interest: public expenditure and parental education. The first panel of Table 1G shows the results of Equation (1) where, in addition, PE_{ct} is interacted with GDP_{ct} for our Models 1 to 7 (see Table 3). The second panel of Table 1G shows the results for the same seven measures of public expenditure for a model where PE_{ct} is interacted with $INEQ_{ct}$. Finally the bottom panel of Table 6 shows the results for a specification which contains interactions of PE_{ct} with both GDP_{ct} and $INEQ_{ct}$. The results we get are similar to those in Table 3.

Table 1G: Differential impact of PE by country GDP and Inequality

I. Interaction PE and GDP	Model 1	Model 2	Model 3	Model 4	Model 5	Model 6	Model 7
Total exp.	-0.0123* (0.0066)						
Exp. in compulsory educ		-0.0327*** (0.0071)					
Exp. in primary educ			-0.0139*** (0.0053)			-0.0130** (0.0056)	-0.0166*** (0.0063)
Exp. in secondary educ				-0.0170*** (0.0043)		-0.0160*** (0.0042)	-0.0197*** (0.0044)
Exp. in tertiary educ					0.0035 (0.0047)		0.0097** (0.0048)
Family educated	-0.0688*** (0.0028)	-0.0684*** (0.0028)	-0.0657*** (0.0029)	-0.0688*** (0.0028)	-0.0675*** (0.0027)	-0.0687*** (0.0028)	-0.0694*** (0.0027)

II. Interaction PE and Inequality

Total exp.	-0.0120*
-------------------	----------

	(0.0066)						
Exp. in compulsory educ	-0.0323*** (0.0067)						
Exp. in primary educ			-0.0142*** (0.0051)		-0.0122** (0.0051)		-0.0126** (0.0058)
Exp. in secondary educ			-0.0154*** (0.0041)		-0.0165*** (0.0039)		-0.0227*** (0.0042)
Exp. in tertiary educ					0.0034 (0.0047)		0.0073 (0.0053)
Family educated	-0.0689*** (0.0028)	-0.0684*** (0.0028)	-0.0657*** (0.0029)	-0.0687*** (0.0028)	-0.0676*** (0.0027)	-0.0687*** (0.0028)	-0.0695*** (0.0027)

III. Interaction PE with both GDP and Inequality

Total exp.	-0.0120* (0.0066)						
Exp. in compulsory educ	-0.0322*** (0.0066)						
Exp. in primary educ			-0.0141*** (0.0051)		-0.0118** (0.0054)		-0.0151** (0.0062)
Exp. in secondary educ			-0.0169*** (0.0044)		-0.0168*** (0.0043)		-0.0229*** (0.0043)
Exp. in tertiary educ					0.0033 (0.0047)		0.0061 (0.0050)
Family educated	-0.0689*** (0.0028)	-0.0684*** (0.0028)	-0.0657*** (0.0029)	-0.0688*** (0.0028)	-0.0676*** (0.0027)	-0.0687*** (0.0028)	-0.0695*** (0.0027)
Observations	138,512	139,807	141,701	140,053	144,349	139,807	138,512

Notes: *** p<0.01, ** p<0.05, * p<0.1. Standard errors are clustered at the country-year of birth level. Public expenditure at age 15-17.

Parental background

Here we check the robustness of our results to alternative measures of parental background. In particular, we use the information provided by individuals about the economic situation in the household: whether parental household had financial difficulties while the individual was a teenager.¹

¹ We decided not to use this variable in the main specification of the model for three reasons. First, this variable does not take the same categorical values in the two cross sections. Second, this variable is missing in four countries in the 2005 cross section (Austria, France, Greece and Portugal), reducing considerably sample size. Third, this variable can be seen as a very subjective indicator. Nonetheless, we use this variable to check the validity of our results to alternative measures of childhood circumstances.

Individuals were asked how frequent financial problems in the household were when they were young teenagers. In the 2005 cross section there are five possible answers: 1 (most of the time), 2 (often), 3 (occasionally), 4 (rarely), and 5 (never). In the 2011 cross section there are six possible answers: 1 (very bad), 2 (bad), 3 (moderately bad), 4 (moderately good), 5 (good), and 6 (very good). We summarized the information of these questions by constructing a dummy variable called "*poor_past*" that takes value 1 when the corresponding variable is either 1 or 2 in the 2005 cross section and when it is 1, 2, or 3 in the 2011 cross section. By doing so, we obtain comparable frequencies in the two cross sections.

In the upper part of Table 2G we present the results of estimating Equation (1), dropping the variable EDFAM from the list of regressors, and replacing it with *poorpast*, which serves as an alternative description of parental background. We also include an interaction term between public expenditure and *poor_past*. We lose some observations from the 2005 wave since four countries do not report this variable in that wave (Austria, France, Greece, and Portugal). We check whether our results change when considering both parental education and past poverty status. The results of these estimations are shown in the bottom part of Table 2G.

Table 2G: Alternative measures of parental background

I. Poor family	Model 1	Model 2	Model 3	Model 4	Model 5	Model 6	Model 7
Total exp.	-0.0211*** (0.0070)						
Exp. in compulsory educ		-0.0395*** (0.0077)					
Exp. in primary educ			-0.0138** (0.0053)			-0.0163*** (0.0057)	-0.0189*** (0.0059)
Exp. in secondary educ				-0.0210*** (0.0043)		-0.0210*** (0.0043)	-0.0242*** (0.0044)
Exp. in tertiary educ					-0.0009 (0.0049)		0.0081 (0.0052)
Family poor	0.0524*** (0.0032)	0.0531*** (0.0032)	0.0528*** (0.0032)	0.0537*** (0.0031)	0.0524*** (0.0030)	0.0531*** (0.0033)	0.0525*** (0.0031)
Observations	124,582	125,886	127,794	126,134	130,435	125,886	124,582

II. Poor family and educated family

Total exp.	-0.0176** (0.0071)						
Exp. in compulsory educ		-0.0371*** (0.0078)					
Exp. in primary educ			-0.0140** (0.0055)			-0.0139** (0.0056)	-0.0160*** (0.0058)
Exp. in secondary educ				-0.0188*** (0.0042)		-0.0195*** (0.0042)	-0.0238*** (0.0045)
Exp. in tertiary educ					0.0020 (0.0048)		0.0082 (0.0050)

Family poor	0.0382*** (0.0027)	0.0387*** (0.0027)	0.0387*** (0.0027)	0.0388*** (0.0027)	0.0381*** (0.0026)	0.0388*** (0.0027)	0.0383*** (0.0027)
Family educated	-0.0673*** (0.0029)	-0.0662*** (0.0030)	-0.0634*** (0.0030)	-0.0671*** (0.0029)	-0.0665*** (0.0028)	-0.0663*** (0.0029)	-0.0673*** (0.0028)
Observations	122,075	123,367	125,251	123,613	127,902	123,367	122,075

Notes: *** p<0.01, ** p<0.05, * p<0.1. Standard errors are clustered at the country-year of birth level. Public expenditure at age 15-17. The specification in panel I is the one proposed in Equation (1) but substituting the variable *educated_family* for *poor_past*. The specification in panel II is the one proposed in Equation (1) but adding the *poor_past* variable to the interaction between PE and *educated_family*.

Results are in line with the ones obtained using only parental education (see Table 3). Public expenditure is strongly associated with poverty reduction. Since the models we estimate contain an interaction term between expenditure and family type, we can compute marginal effects separately according to family type. This is what Table 3G shows, for the model that only includes *poor_past* instead of EDFAM. Similar to Table 4 above, in the upper part of the table we present the results corresponding to Models 1-5. Below we present the results corresponding to Models 6 and 7.

Table 3G: Decomposition of the marginal effect of public expenditure

I. Models 1-5	Total	Compulsory	Primary	Secondary	Tertiary
Poor family = 0	-0.0134* (0.0071)	-0.0355*** (0.0078)	-0.0090* (0.0054)	-0.0185*** (0.0045)	0.0072 (0.0051)
Poor family = 1	-0.0461*** (0.0091)	-0.0527*** (0.0094)	-0.0294*** (0.0079)	-0.0292*** (0.0059)	-0.0266*** (0.0069)
Observations	124,582	125,886	127,794	126,134	130,435

II. Model 6					
Poor family = 0			-0.0129** (0.0058)	-0.0203*** (0.0045)	
Poor family = 1			-0.0276*** (0.0094)	-0.0233*** (0.0069)	
Observations			125,886	125,886	

III. Model 7					
Poor family = 0			-0.0180*** (0.0063)	-0.0277*** (0.0048)	0.0181*** (0.0053)

Poor family = 1	-0.0219** (0.0098)	-0.0129* (0.0077)	-0.0242*** (0.0083)
Observations	124,582	124,582	124,582

Note: *** p<0.01, ** p<0.05, * p<0.1. Standard errors are clustered at the country-year of birth level. Public expenditure at age 15-17.

When we disaggregate the effect of expenditure by family type, we find that the negative association between public expenditure and poverty for individuals from poor families is stronger, in general, than the corresponding association for individuals from non-poor families.

Finally, we try an alternative definition of parental background by not categorizing as poor those individuals in the 2011 cross section who answered that family situation was “moderately bad”. This means that we consider that only those individuals for which the corresponding variable is either 1 or 2 were poor. That is, now we present results defining the variable *poor_past* which takes value 1 when the corresponding variable in 2005 and 2011 is equal to 1 or 2:

Table 4G: Alternative past poverty definition

I. Poor family	Model 1	Model 2	Model 3	Model 4	Model 5	Model 6	Model 7
Total exp.	-0.0205*** (0.0071)						
Exp. in compulsory education		-0.0397*** (0.0077)					
Exp. in primary education			-0.0140*** (0.0054)			-0.0166*** (0.0057)	-0.0188*** (0.0059)
Exp. in secondary education				-0.0205*** (0.0043)		-0.0209*** (0.0042)	-0.0238*** (0.0044)
Exp. in tertiary education					-0.0004 (0.0050)		0.0083 (0.0053)
Family poor	0.0611*** (0.0037)	0.0623*** (0.0038)	0.0627*** (0.0039)	0.0628*** (0.0037)	0.0608*** (0.0036)	0.0627*** (0.0038)	0.0621*** (0.0037)
Observations	124,582	125,886	127,794	126,134	130,435	125,886	124,582

II. Poor family and educated family

Total exp.	-0.0166** (0.0071)						
Exp. in compulsory education		-0.0363*** (0.0078)					
Exp. in primary education			-0.0139** (0.0056)			-0.0136** (0.0057)	-0.0156*** (0.0059)

Exp. in secondary education					-0.0183*** (0.0043)	-0.0191*** (0.0042)	-0.0234*** (0.0045)
Exp. in tertiary education						0.0027 (0.0048)	0.0086* (0.0051)
Family poor	0.0469*** (0.0034)	0.0476*** (0.0034)	0.0482*** (0.0034)	0.0478*** (0.0034)	0.0469*** (0.0033)	0.0478*** (0.0034)	0.0475*** (0.0034)
Family educated	-0.0685*** (0.0030)	-0.0675*** (0.0030)	-0.0647*** (0.0031)	-0.0681*** (0.0030)	-0.0676*** (0.0029)	-0.0676*** (0.0030)	-0.0687*** (0.0029)
Observations	122,075	123,367	125,251	123,613	127,902	123,367	122,075

Notes: *** p<0.01, ** p<0.05, * p<0.1. Standard errors are clustered at the country-year of birth level. The specification in panel I is the one proposed in Equation (1) but substituting the variable educated_family for poor_past. The specification in panel II is the one proposed in Equation (1) but adding the poor_past variable to the interaction between PE and educated_family.

As can be observed, the result is robust to this new definition of poor family.

One interesting implication of our analysis so far is as follows. Higher levels of public expenditure reduce on average the probability of being poor when adult. Additionally, being raised in a non-poor household also reduces the probability of being poor when adult. Then, the impact of public expenditure gets amplified in the long-run. Spending more money in today's children will make less likely that these kids will be poor when adults. This, in turn, will reduce the probability of being poor for next generation's children.²

Poverty measure

Here we check the robustness of our results to alternative definitions of poverty. The poverty measure used in the main part of the paper (variable HX080 in the EU-SILC database) uses disposable household income (variable HY020). In particular, the poverty indicator takes value one if the equivalized disposable household income is below 60% of median equivalized household disposable income. This is the official measure of poverty in the European Union. Disposable household income is the sum of market income plus social transfers minus taxes and social security contributions. Here we consider two alternative definitions of poverty in which we exclude some social transfers from household disposable income. We do this to avoid the impact of current redistributive policies on poverty status. Social transfers cause some individuals to be above the poverty threshold. If we do not take this account we may attribute to past public expenditure an effect that is just related to current public transfers and therefore we would be overestimating the impact of past public expenditure.

Our first alternative measure (gross poverty A) excludes most social transfers, in particular, unemployment benefits, sickness benefits, disability benefits, education-related allowances, family/children related allowances, social exclusion not elsewhere classified and housing

² It can be checked that individuals with non-educated parents are indeed differentially poorer: among individuals with non-educated parents almost 21% were poor when teenager (poor_past=1) whereas it is only 7.47% among individuals with educated-parents.

allowances. However it retains old-age benefits and survivor' benefits.³ Our second alternative (gross-poverty B) is similar to the previous one, but including also unemployment benefits.⁴ That is, it is an intermediate measure between the previous two ones. The results of estimating Equation (1) for Models 1-7 using these two alternative poverty definitions are shown in Table 5G.

Table 5G: Overall marginal effects of public expenditure: Gross Poverty

I. Gross Poverty							
A	Model 1	Model 2	Model 3	Model 4	Model 5	Model 6	Model 7
Total exp.	0.0064 (0.0085)						
Exp. in compulsory educ		-0.0208** (0.0094)					
Exp. in primary educ			-0.0152** (0.0069)			-0.0131* (0.0073)	-0.0216*** (0.0073)
Exp. in secondary educ				-0.0095 (0.0058)		-0.0095 (0.0058)	-0.0171*** (0.0061)
Exp. in tertiary educ					0.0176*** (0.0061)		0.0245*** (0.0063)
Family educated	-0.1138*** (0.0032)	-0.1130*** (0.0032)	-0.1102*** (0.0033)	-0.1132*** (0.0031)	-0.1123*** (0.0031)	-0.1132*** (0.0032)	-0.1139*** (0.0031)
Observations	138,536	139,831	141,725	140,077	144,373	139,831	138,536

II. Gross Poverty B

Total exp.	0.0045 (0.0082)						
Exp. in compulsory educ		-0.0217** (0.0090)					
Exp. in primary educ			-0.0122* (0.0067)			-0.0091 (0.0070)	-0.0166** (0.0071)
Exp. in secondary educ				-0.0135**		-0.0134**	-0.0202***

³ Our new measure of equivalized disposable household income is equal to the product of total disposable household income before social transfers other than old-age and survivor's benefits (HY022), multiplied by an inflation factor for within-household non-response (HY025), divided by equivalized household size (HX050). That is, ((HY022*HY025)/(HX050)).

⁴ Total disposable income now is equal to HY022 plus unemployment benefits (PY090G). In order to have the same number of missing observations in the Gross Poverty B and our poverty measure we redefine PY090G to be equal to 0 when missing.

				(0.0056)		(0.0056)	(0.0059)
Exp. in tertiary educ					0.0157***		0.0221***
					(0.0059)		(0.0061)
Family educated	-0.1102***	-0.1096***	-0.1068***	-0.1099***	-0.1087***	-0.1098***	-0.1105***
	(0.0032)	(0.0033)	(0.0033)	(0.0032)	(0.0031)	(0.0032)	(0.0031)
Observations	138,536	139,831	141,725	140,077	144,373	139,831	138,536

Notes: *** p<0.01, ** p<0.05, * p<0.1. Standard errors are clustered at the country-year of birth level. Public expenditure at age 15-17.

In Table 6G we decompose the marginal effect of public expenditure on gross poverty A for individuals with educated and non-educated parents.

Table 6G: Decomposition of the marginal effect of public expenditure

I. Models 1-5	Total	Compulsory	Primary	Secondary	Tertiary
Educated family = 0	-0.0161*	-0.0383***	-0.0295***	-0.0245***	-0.0014
	(0.0085)	(0.0095)	(0.0072)	(0.0061)	(0.0062)
Educated family = 1	0.0456***	0.0094	0.0092	0.0164**	0.0511***
	(0.0098)	(0.0107)	(0.0081)	(0.0066)	(0.0072)
Observations	138,536	139,831	141,725	140,077	144,373
II. Model 6					
Educated family = 0			-0.0149*	-0.0233***	
			(0.0085)	(0.0066)	
Educated family = 1			-0.0098	0.0144**	
			(0.0083)	(0.0070)	
Observations			139,831	139,831	
III. Model 7					
Educated family = 0			-0.0212**	-0.0236***	0.0100
			(0.0087)	(0.0069)	(0.0066)
Educated family = 1			-0.0224***	-0.0057	0.0497***
			(0.0081)	(0.0082)	(0.0079)

Observations	138,536	138,536	138,536
--------------	---------	---------	---------

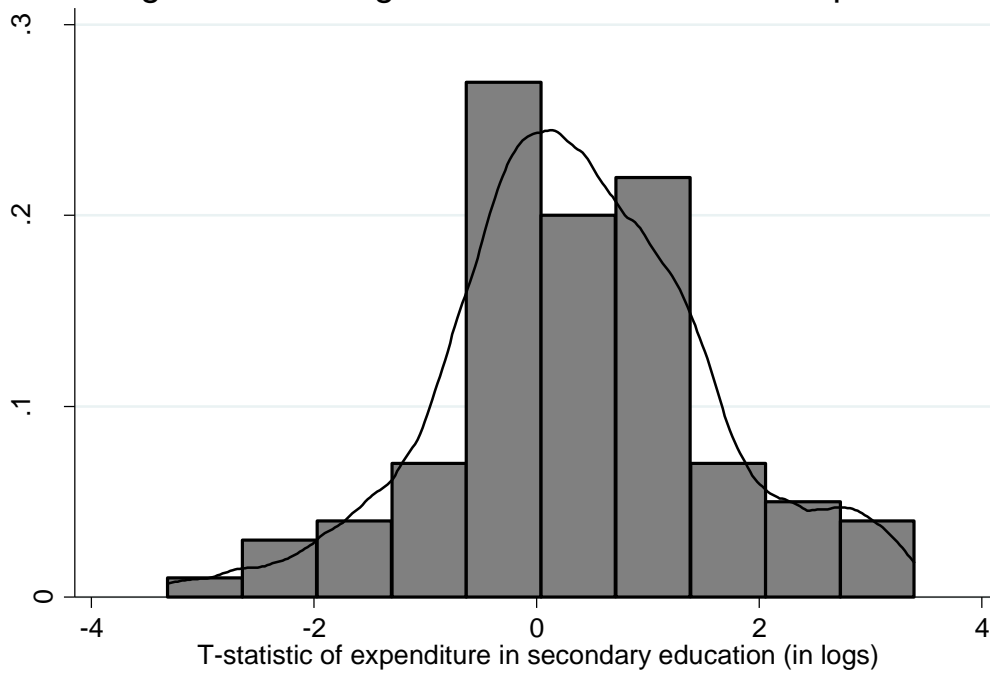
Notes: *** p<0.01, ** p<0.05, * p<0.1. Standard errors are clustered at the country-year of birth level. Public expenditure at age 15-17.

Again we find a strong association between public expenditure and poverty reduction, mostly for individuals from poor parental backgrounds. To conclude, the impact of public expenditure on poverty reduction is robust to whether current poverty status is measured before or after current social transfers. In other words, there is no evidence that we are overestimating the impact of past public expenditure.

Placebo treatment

In this final robustness check of the paper, we perform a falsification exercise. In our main specification (Models 1-7) we have analyzed the effect of public expenditure when the individual was 15-17 on adult poverty. What we propose to do here is to regress poverty rates in adulthood on public expenditure from a different period than the one we are considering in our main specification. In particular, to each cohort from a given country, we randomly assign public expenditure corresponding to a different cohort from the same country. As an example, consider the cohort of individuals born in Austria in 1970. In our main specification we assign to these individuals the average of public expenditure in the years 1985-87. What we do now is to assign them a different expenditure level chosen randomly from all the expenditure levels from the different cohorts in Austria. Once we do this, we estimate again Equation (1) with this new measure of public expenditure. We repeat this exercise one hundred times. If the results in Section 4 were just spurious correlations, the result of this falsification exercise should have little impact on them. We have done this exercise only for public expenditure in secondary education, our Model 4. Recall that the marginal effect we obtained (see Table 3) was -0.0158. In Figure 4 below we show a histogram of the t-statistics corresponding to the one hundred regressions in which we reshuffle the values of public expenditure in secondary education. Only in four cases out of 100 we get a value of the t-statistic below -2, while in 9 cases we get a value above 2. That is, only in 4 cases we obtain a value of the coefficient of interest that is negative and statistically significant. In 9 out of 100 we get a value that is positive and statistically significant, while in 87 out of 100 repetitions the coefficient of interest is not statistically different from zero. For the sake of comparison, we also estimate the coefficient of the dummy variable $EDFAM_i$. In all the 100 repetitions the coefficient of this variable is negative and statistically significant. In fact, it changes almost nothing since the lowest value we estimate is -.0676 and the highest is -.0659.

Figure 1F: Histogram of t-statistics of 100 repetitions



As can be observed, even though the impact of family education remains significant in all cases, the effect of public expenditure is not significant in most cases. These results indicate that the actual measures of public expenditure are meaningful determinants of the variation of current poverty rates among individuals.